



EDWARDS-CORRY

SCHEFFERT[®]

**Auxiliary
Diesel Engine**

MODEL

DM-72D



Maximum 72 hp @ 1800 rpm

DESCRIPTION

ENGINE TYPE	2 Cylinders, 4 Valve, water cooled, overhead valve in-line, wet sump type - 3 valve bearings
POWER OUTPUT	72 HP, 2 year warranty
CVT, TAIL, HOSE & STRAPS	1.75 in x 1.25 in (2 x 1/2 in x 1/2 in)
COMPRESSION RATIO	20 to 1
PURCH DISPLACEMENT	75.5 cu in (1234cc)
STROKE	3 - 3/4
MAX. INJECTION PUMP	Direct type, in line
OPERATOR	Mechanical type all speed controlled
ALTERNATOR	40 AMP 12V
STARTING MOTOR	12V - 1.5HP
LUBRICATING OIL CAPACITY	1.8 Gals. (7.5L)

WEIGHT & LENGTH OVERALL

Overall	42.5	18"
Mount Drive Shafts	42.5	18"
Rear	42.5	18"
Hydraulic	42.5	18"
Injection Gear Mount	42.5	18"
Rear	42.5	18"
Hydraulic	42.5	18"

FEATURES EQUIPPED

water cooled exhaust valve,
11 lbs. 10 oz aluminum wet
sump, and 17 inch high torque
clutch, heavy duty cooling system
with fan pulley, alternator
with fan pulley, direct water injection
fuel system with filter, approved
flame arrester, oil filter

GENIE MOTOR

Model #10000

See manual for specifications and details of Genie Motors

MANUFACTURERS OF GENUINE **SCHEFFERT**[®] ENGINES AND PARTS

DEC 1 1974

PERFORMANCE

EXCEPTIONAL EFFICIENCY

EXCELLENT TORQUE

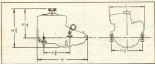
The Model 48-700 is a four stroke, 2 cylinder, low oil-burner diesel engine with turbodiesel chamber. More torque, higher rotation speed and excellent torque performance for control of most machines can be had to give to the double advantage of increased output and light weight. It is available with hydraulic or manual transmission, and either with direct cooling for operation in fresh water areas, or closed system fresh water cooling for use in salt water.



Model 48-700 with 1000 RPM and 2000 RPM

Model 48-700 with 1000 RPM and 2000 RPM

Model 48-700 with 1000 RPM and 2000 RPM



Model 48-700 with reduction gear



GRAYMARINE COMPANY

1000 WEST 10TH AVENUE, DENVER, COLORADO 80202 • CLEVELAND • CHICAGO • HOUSTON • MIAMI • NEW YORK

TELEPHONE: (303) 733-1111 • CLEVELAND: (216) 733-1111 • CHICAGO: (312) 733-1111 • MIAMI: (305) 733-1111 • NEW YORK: (212) 733-1111



DIESEL MOTOR

Model 1000
Inch or Inch-Pound

CATERPILLAR®



Auxiliary Diesel Engine

MODEL

GM - 1000



Five cylinder with reduction
gear drive

APPLICATIONS

ENGINE TYPE	5 cylinders, 4 1/2 in., water cooled, overhead valve engine, semi-direct type - 4 main bearings
POWER RATING	50 H.P. @ 2000 RPM
Vol. Wts. 500 & 1700	3.74 cu ft (100 cu ft) - 1000 & 1700
COMPRESSION RATIO	15 to 1
STEEL DISCHARGE	100.0 cu ft (1700)
EXHAUST MANIFOLD	1-1/2
VALVE LIFTING MECH.	Rock type, in line
CRANKCASE	Submerged type oil sump (optional)
ALTERNATOR	60 AMP 12V
STARTING MOTOR	12V - 1/2 HP
EXHAUST BEL. CAPACITY	1 cu. ft. (100)

WEIGHT & DIMENSIONS

Overall	420" 20"
Block Drive Height	
Block	120" 20"
Alternator	120" 20"
Reduction Gear Height	
Block	120" 20"
Alternator	120" 20"

Standard options:

Water cooled exhaust valve,
12 Volt, 24 amp alternator with
regulator, and 12 Volt high torque
motor, float valve cooling system
with level indicator, adjustable
water pump, block with indicator
fuel system with tank, approved
flame arrester, oil filter

Illustration for identification purposes only. Not to scale.

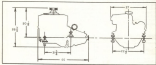
MANUFACTURERS OF DIESEL **CATERPILLAR** ENGINES AND PARTS

HC 1-2 1959

PERFORMANCE

EXCELLENT DESIGN

The Model 99-1200 is a four stroke, 2 cylinder, low rpm, torque driven engine with carburetor injection. High torque, higher revs, more speed and positive thrust advantages for control of well thickness combine to give it the flexible advantage of increased output with light weight. It is available with brackets or special transmission, and works with direct coupling for operation in fresh water areas, or closed system fresh water cooling for use in salt water.



Model 99-1200 with reduction gear



GRAYMARINE COMPANY

10000 W. 10th Street, Edina, Minnesota 55425 • 612-935-1100 • FAX: 612-935-1101 • E-MAIL: "GMC" @ "AOL" • WWW: WWW.GRAYMARINE.COM



DEERE MOTOR

140000 400/1400

Deere or John Deere

DEERE MOTOR



Auxiliary Diesel Engine

MODEL

GM - 144B



For auxiliary work, reduction
gear drive

DESCRIPTION

MODEL TYPE	4 cylinders, 4 cycle, water cooled, overhead valve design, cast iron cylinder type - 2 valve per cylinder
NET WEIGHT	60 LBS. @ 1000 RPM
OIL, WATER, FUEL & FRESH WATER CONNECTIONS	1/2" to 1" & 1/4" to 1" - Brass & Steel
FLUID CAPACITY	20 to 1
FLUID DISPLACEMENT	144.4 cc to 2000 cc
FUEL TYPE	Distillate
FUEL INJECTION PUMP	Brush type, in line
VALVES	Reversible type air speed controlled
VALVE TRAIN	60 100 cc
FUEL SYSTEM	1.25 - 1.500
OPERATING AIR PRESSURE	1.8 gpa. (1/2")

ENGINE & DRIVE DETAILS

Model	144B	147
Drive Drive Models		
Model	144B	147
Model	144B	147
Reduction Gear Models		
Model	144B	147
Model	144B	147

FLUIDS SYSTEM

Water cooled exhaust steam.
 11 Ppsi, 10 psi atmosphere with regulator, and 12 Ppsi high temp. service. Fresh water cooling system with heat exchanger, automatic water service, fresh water injection. Fuel system with filter, approved flame arrester, oil filter.

DEERE MOTOR ENGINE TECHNOLOGY DEVELOPING BETTER MACHINES

MANUFACTURERS OF DEERE

DEERE MOTOR

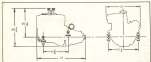
ENGINES AND PARTS

DEC 1966

PERFORMANCE

Model 1140

The Model 1140 is a four stroke, 4 cylinder, 100 cc. engine fitted equip with carburetor, valves, spark, timing, higher rotation speed and precision timing mechanism. The control of wall thickness can also be given to the fabric advantage of increased output and light weight. It is available with hydraulic or manual transmission, and either with direct cooling for operation in fresh water areas, or closed system fresh water cooling for use in salt water.



Model 1140 with reduction gear



GRAYMARINE COMPANY

200 WEST 10TH AVENUE, CHICAGO, ILLINOIS 18, U.S.A. • TEL. 312-321-1100 • CABLE "GRAYMARB" • TELE. 312-321-1100