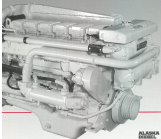


LUGGER

6140AL2

500-600-700

REPLACEMENT



**FLORIDA
INBOARD
ELECTRIC**



6740AL2

An investment in high performance technology.

From the cover, the 6740 can deliver the performance advantages of the 6700 series engine in a class. The 6740AL2 delivers more power output than other engines in its class.

Whether you require more air, more torque or longer life, the 6740AL2 provides the performance, reliability, simplicity and lower operating costs.

It begins with specially designed components. Think: 6740AL2 is one of the world's largest diesel engines ever, and built to heavy

construction equipment with heavy-duty frames and with dual secondary fuel stacks. Because design often is the consequence of the engine's frame.

On this strong foundation, we built a more flexible horsepower (HP) package, conventional valves and overhead injection.

More goes into the "C" (Cylinder) for both more air.

The 6740AL2 produces 375 HP and nearly 500 lbs of torque at 1800 rpm. The new level of performance is accomplished without the extra weight and expense of a traditional 6-cylinder diesel.

- 6-cylinder injection pump
- Increased fuel injection flow
- 50% more coolant pump capacity
- Increased turbocharger airflow
- 12 hole fuel injectors for improved fuel atomization
- Increased surface of main bearings

- Superduty turbocharger
- Superduty turbocharger blowback
- Close-placed exhaust valves
- Intake valve-injection valve
- Superduty-like pistons
- Higher capacity turbochargers
- Valve gear relief system

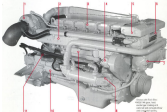
High power, low weight for increased fuel speed.

Always important to your bottom line, fuel speed becomes increasingly so with increased operation. The 6740AL2's higher power-to-weight ratio provides the power you need without adding the cost you want to avoid.

Get specific about fuel.

Now there's one larger operational expense, it's maintenance and it's made simple.

Think: Specific fuel consumption (SFC) is a measurement of the weight of fuel an engine burns per horsepower-hour for one hour. The 6740AL2 SFC is 0.28 or less (2.8 lbs/hp/hr).



6740AL2 is one of the world's largest diesel engines ever, and built to heavy construction equipment with heavy-duty frames and with dual secondary fuel stacks.

Compare to DFC we have engine accessories. And remember a 2.4 difference in DFC can save you thousands of dollars over the latest equipment.

Keep engine wear down

Interim engines like its displacement and power, the DFC has the right engine specs. Unlike regular, 100-hp, in-line diesel with single overhead unintercooled engine, our new, easy-to-install, interlock setup. These advantages make it our engine installation.

Accessories to know

The total to use includes all maintenance parts per set you will utilize such as filter, belts, hoses, etc. to accessories like engine, individual heads, waterfalls, etc. unless you have a low maintenance.

and a charge pump system. Since the engine only has an air filter, interlock water inlets, it has two ports to use for interlocking. And the engine has two ports for engine water and lower engine water.

Check for PFD for power and fuel costs

You can take up to 1000 miles from the DFC with no extra cost. Just PFD. There is also a fuel pump system and another system. The DFC has a hydraulic power steering pump, alternator, water pump, and other equipment.

Water, water, water

Now the engine has a water pump and alternator. This also means you can install water in your engine. This means you can have a

water pump and alternator. After installation you can have your engine water and your water.

Equipment

Engine has a water pump and alternator. There is no extra cost. Just the low cost of the DFC. The DFC has a water pump, alternator, water pump, and other equipment. This means you can have a water pump and alternator.

ENGINE SPECIAL EQUIPMENT

1. Interlock engine water pump and alternator. 2. Interlock engine water pump and alternator. 3. Interlock engine water pump and alternator. 4. Interlock engine water pump and alternator. 5. Interlock engine water pump and alternator. 6. Interlock engine water pump and alternator. 7. Interlock engine water pump and alternator. 8. Interlock engine water pump and alternator. 9. Interlock engine water pump and alternator. 10. Interlock engine water pump and alternator.

11. Interlock engine water pump and alternator. 12. Interlock engine water pump and alternator. 13. Interlock engine water pump and alternator. 14. Interlock engine water pump and alternator. 15. Interlock engine water pump and alternator. 16. Interlock engine water pump and alternator. 17. Interlock engine water pump and alternator. 18. Interlock engine water pump and alternator. 19. Interlock engine water pump and alternator. 20. Interlock engine water pump and alternator.

21. Interlock engine water pump and alternator. 22. Interlock engine water pump and alternator. 23. Interlock engine water pump and alternator. 24. Interlock engine water pump and alternator. 25. Interlock engine water pump and alternator. 26. Interlock engine water pump and alternator. 27. Interlock engine water pump and alternator. 28. Interlock engine water pump and alternator. 29. Interlock engine water pump and alternator. 30. Interlock engine water pump and alternator.

31. Interlock engine water pump and alternator. 32. Interlock engine water pump and alternator. 33. Interlock engine water pump and alternator. 34. Interlock engine water pump and alternator. 35. Interlock engine water pump and alternator. 36. Interlock engine water pump and alternator. 37. Interlock engine water pump and alternator. 38. Interlock engine water pump and alternator. 39. Interlock engine water pump and alternator. 40. Interlock engine water pump and alternator.

41. Interlock engine water pump and alternator. 42. Interlock engine water pump and alternator. 43. Interlock engine water pump and alternator. 44. Interlock engine water pump and alternator. 45. Interlock engine water pump and alternator. 46. Interlock engine water pump and alternator. 47. Interlock engine water pump and alternator. 48. Interlock engine water pump and alternator. 49. Interlock engine water pump and alternator. 50. Interlock engine water pump and alternator.



2.4 LITER 100

6140AL2

Only a single cam for all three cylinders. Only three valves per cylinder performed.

Engine Block

- Aluminum block has two intake/exhaust ports.
- Five-cylinder engine had offset ignition.
- Intake valve on each cylinder, separate exhaust valve.
- Overlap: 180° and overlap with intake/exhaust ports.
- Large offset and connecting rods.
- Relatively low cylinder bore for long strokes. Long life and lower initial cost. Low noise in 1000 rpm range in general, and in a large range of operation. Typical intake and exhaust valve lift was 0.8 in.
- No cylinder head cooling water. One intake valve, one exhaust valve, one cooling valve. Two valves sharing the job. Two intake valves, one exhaust valve. Intake valves in aluminum, exhaust valves in cast iron.



Figure 10.10.10.1. Engine block.

- Three separate intake systems. One for each cylinder. For three cylinders.
- Two valves per cylinder per stroke. Intake valve and exhaust valve. Intake valve and exhaust valve. Intake valve and exhaust valve.
- Two valves per cylinder per stroke. Intake valve and exhaust valve. Intake valve and exhaust valve.

Timing System

- Full timing advance system. One intake/exhaust valve per cylinder.
- Two valves per cylinder per stroke. Intake valve and exhaust valve. Intake valve and exhaust valve.
- Two valves per cylinder per stroke. Intake valve and exhaust valve. Intake valve and exhaust valve.
- Two valves per cylinder per stroke. Intake valve and exhaust valve. Intake valve and exhaust valve.
- Two valves per cylinder per stroke. Intake valve and exhaust valve. Intake valve and exhaust valve.
- Two valves per cylinder per stroke. Intake valve and exhaust valve. Intake valve and exhaust valve.
- Two valves per cylinder per stroke. Intake valve and exhaust valve. Intake valve and exhaust valve.
- Two valves per cylinder per stroke. Intake valve and exhaust valve. Intake valve and exhaust valve.



- Two valves per cylinder per stroke. Intake valve and exhaust valve. Intake valve and exhaust valve.
- Two valves per cylinder per stroke. Intake valve and exhaust valve. Intake valve and exhaust valve.
- Two valves per cylinder per stroke. Intake valve and exhaust valve. Intake valve and exhaust valve.
- Two valves per cylinder per stroke. Intake valve and exhaust valve. Intake valve and exhaust valve.
- Two valves per cylinder per stroke. Intake valve and exhaust valve. Intake valve and exhaust valve.
- Two valves per cylinder per stroke. Intake valve and exhaust valve. Intake valve and exhaust valve.
- Two valves per cylinder per stroke. Intake valve and exhaust valve. Intake valve and exhaust valve.
- Two valves per cylinder per stroke. Intake valve and exhaust valve. Intake valve and exhaust valve.



Oil System

- Two valves per cylinder per stroke. Intake valve and exhaust valve. Intake valve and exhaust valve.
- Two valves per cylinder per stroke. Intake valve and exhaust valve. Intake valve and exhaust valve.
- Two valves per cylinder per stroke. Intake valve and exhaust valve. Intake valve and exhaust valve.

6140AL2 Engine Construction Features

- Large 100, 180 and 180° overlap. One for each cylinder. One for each cylinder. One for each cylinder.
- Large 100, 180 and 180° overlap. One for each cylinder. One for each cylinder. One for each cylinder.
- Large 100, 180 and 180° overlap. One for each cylinder. One for each cylinder. One for each cylinder.
- Large 100, 180 and 180° overlap. One for each cylinder. One for each cylinder. One for each cylinder.
- Large 100, 180 and 180° overlap. One for each cylinder. One for each cylinder. One for each cylinder.
- Large 100, 180 and 180° overlap. One for each cylinder. One for each cylinder. One for each cylinder.
- Large 100, 180 and 180° overlap. One for each cylinder. One for each cylinder. One for each cylinder.
- Large 100, 180 and 180° overlap. One for each cylinder. One for each cylinder. One for each cylinder.
- Large 100, 180 and 180° overlap. One for each cylinder. One for each cylinder. One for each cylinder.
- Large 100, 180 and 180° overlap. One for each cylinder. One for each cylinder. One for each cylinder.

- Large 100, 180 and 180° overlap. One for each cylinder. One for each cylinder. One for each cylinder.
- Large 100, 180 and 180° overlap. One for each cylinder. One for each cylinder. One for each cylinder.
- Large 100, 180 and 180° overlap. One for each cylinder. One for each cylinder. One for each cylinder.
- Large 100, 180 and 180° overlap. One for each cylinder. One for each cylinder. One for each cylinder.
- Large 100, 180 and 180° overlap. One for each cylinder. One for each cylinder. One for each cylinder.
- Large 100, 180 and 180° overlap. One for each cylinder. One for each cylinder. One for each cylinder.
- Large 100, 180 and 180° overlap. One for each cylinder. One for each cylinder. One for each cylinder.
- Large 100, 180 and 180° overlap. One for each cylinder. One for each cylinder. One for each cylinder.
- Large 100, 180 and 180° overlap. One for each cylinder. One for each cylinder. One for each cylinder.
- Large 100, 180 and 180° overlap. One for each cylinder. One for each cylinder. One for each cylinder.



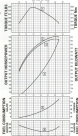
Figure 10.10.10.2. Engine block.

Performance Data

Test Rating	High Output	Mid-Output	Continuous Duty
Rated Output	300 hp (220 kW) at 1800 rpm	200 hp (147 kW) at 1800 rpm	150 hp (110 kW) at 1800 rpm
Breaker Rating	400 hp (298 kW) at 1800 rpm	300 hp (220 kW) at 1800 rpm	200 hp (147 kW) at 1800 rpm
Maximum Torque	324 ft-lb (439 Nm)	216 ft-lb (292 Nm)	162 ft-lb (219 Nm)
Service Factor	1.15 (1.10 at 1800 rpm)	1.15 (1.10 at 1800 rpm)	1.15 (1.10 at 1800 rpm)
Efficiency	89.5% (89.0% at 1800 rpm)	89.5% (89.0% at 1800 rpm)	89.5% (89.0% at 1800 rpm)
Power Factor	0.91 (0.91 at 1800 rpm)	0.91 (0.91 at 1800 rpm)	0.91 (0.91 at 1800 rpm)
Temperature Rise	100 °F (38 °C)	100 °F (38 °C)	100 °F (38 °C)
Insulation Class	F (155 °C)	F (155 °C)	F (155 °C)

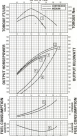
High Output

RPM @ 100%



Mid-Output

RPM @ 100%



Notes:

1. All ratings are based on 400 V, 3-phase, 60 Hz.
2. All ratings are based on 100% relative humidity.
3. All ratings are based on 100% relative humidity.
4. All ratings are based on 100% relative humidity.
5. All ratings are based on 100% relative humidity.

Notes:

1. All ratings are based on 400 V, 3-phase, 60 Hz.
2. All ratings are based on 100% relative humidity.
3. All ratings are based on 100% relative humidity.
4. All ratings are based on 100% relative humidity.
5. All ratings are based on 100% relative humidity.

Specialty Loans, Mortgages, etc.

Refinance	2.99% - 3.99%
Buydown	2.99% - 3.99%
Reverse mortgage	2.99% - 3.99%
Home equity loan	2.99% - 3.99%
Home equity line of credit	2.99% - 3.99%

Auto Loans

3-year	3.99%
4-year	4.99%
5-year	5.99%
6-year	6.99%
7-year	7.99%
8-year	8.99%
9-year	9.99%
10-year	10.99%

Business Loans

1-year	5.99%
2-year	6.99%
3-year	7.99%
4-year	8.99%
5-year	9.99%

Personal Loans

1-year	5.99%
2-year	6.99%
3-year	7.99%
4-year	8.99%
5-year	9.99%

Student Loans

1-year	5.99%
2-year	6.99%
3-year	7.99%
4-year	8.99%
5-year	9.99%

Home Improvement Loans

1-year	5.99%
2-year	6.99%
3-year	7.99%
4-year	8.99%
5-year	9.99%

Auto Leasing

3-year	3.99%
4-year	4.99%
5-year	5.99%
6-year	6.99%
7-year	7.99%

Business Leasing

3-year	3.99%
4-year	4.99%
5-year	5.99%
6-year	6.99%
7-year	7.99%

Personal Leasing

3-year	3.99%
4-year	4.99%
5-year	5.99%
6-year	6.99%
7-year	7.99%

Home Improvement Leasing

3-year	3.99%
4-year	4.99%
5-year	5.99%
6-year	6.99%
7-year	7.99%

Auto Leasing

3-year	3.99%
4-year	4.99%
5-year	5.99%
6-year	6.99%
7-year	7.99%

Business Leasing

3-year	3.99%
4-year	4.99%
5-year	5.99%
6-year	6.99%
7-year	7.99%

Personal Leasing

3-year	3.99%
4-year	4.99%
5-year	5.99%
6-year	6.99%
7-year	7.99%

New Home Purchase Plans

Get the best rates on your new home purchase with our special financing programs. Rates are subject to credit review.

Rate for 30-year fixed rate mortgage: 3.99% - 4.99%
 Rate for 15-year fixed rate mortgage: 2.99% - 3.99%

1. Down payment of 3.5% required for 30-year fixed rate mortgage.
2. Down payment of 5% required for 15-year fixed rate mortgage.
3. Minimum credit score of 620 required.
4. Borrower must be a U.S. citizen or permanent resident.
5. Borrower must be at least 21 years old at the time of purchase.

Auto Leasing Programs

Model	3 Year	4 Year	5 Year	6 Year	7 Year
Model A	3.99%	4.99%	5.99%	6.99%	7.99%
Model B	3.99%	4.99%	5.99%	6.99%	7.99%
Model C	3.99%	4.99%	5.99%	6.99%	7.99%
Model D	3.99%	4.99%	5.99%	6.99%	7.99%
Model E	3.99%	4.99%	5.99%	6.99%	7.99%
Model F	3.99%	4.99%	5.99%	6.99%	7.99%
Model G	3.99%	4.99%	5.99%	6.99%	7.99%
Model H	3.99%	4.99%	5.99%	6.99%	7.99%
Model I	3.99%	4.99%	5.99%	6.99%	7.99%
Model J	3.99%	4.99%	5.99%	6.99%	7.99%

Business Leasing Programs

Model	3 Year	4 Year	5 Year	6 Year	7 Year
Model A	3.99%	4.99%	5.99%	6.99%	7.99%
Model B	3.99%	4.99%	5.99%	6.99%	7.99%
Model C	3.99%	4.99%	5.99%	6.99%	7.99%
Model D	3.99%	4.99%	5.99%	6.99%	7.99%
Model E	3.99%	4.99%	5.99%	6.99%	7.99%
Model F	3.99%	4.99%	5.99%	6.99%	7.99%
Model G	3.99%	4.99%	5.99%	6.99%	7.99%
Model H	3.99%	4.99%	5.99%	6.99%	7.99%
Model I	3.99%	4.99%	5.99%	6.99%	7.99%
Model J	3.99%	4.99%	5.99%	6.99%	7.99%

Personal Leasing Programs

Model	3 Year	4 Year	5 Year	6 Year	7 Year
Model A	3.99%	4.99%	5.99%	6.99%	7.99%
Model B	3.99%	4.99%	5.99%	6.99%	7.99%
Model C	3.99%	4.99%	5.99%	6.99%	7.99%
Model D	3.99%	4.99%	5.99%	6.99%	7.99%
Model E	3.99%	4.99%	5.99%	6.99%	7.99%
Model F	3.99%	4.99%	5.99%	6.99%	7.99%
Model G	3.99%	4.99%	5.99%	6.99%	7.99%
Model H	3.99%	4.99%	5.99%	6.99%	7.99%
Model I	3.99%	4.99%	5.99%	6.99%	7.99%
Model J	3.99%	4.99%	5.99%	6.99%	7.99%

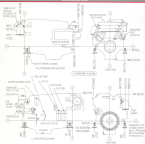
Home Equity Loans

Get the best rates on your home equity loan with our special financing programs. Rates are subject to credit review.

Rate for 1-year fixed rate mortgage: 3.99% - 4.99%
 Rate for 2-year fixed rate mortgage: 4.99% - 5.99%
 Rate for 3-year fixed rate mortgage: 5.99% - 6.99%

1. Down payment of 10% required.
2. Minimum credit score of 620 required.
3. Borrower must be a U.S. citizen or permanent resident.
4. Borrower must be at least 21 years old at the time of purchase.
5. Borrower must have a steady source of income.

Dimensions in mm



Technical Reference: Dimensions are given in millimeters and are approximate values unless stated otherwise with a dash and a code. Storage instructions: Do not store for extended periods in the state of "ON". Minimum ambient temperature: 0 °C; maximum: 40 °C. Storage humidity: 90% (relative humidity). Weight: 20 kg (approx.).



Product Line
 Standalone generator
 4/110 - 4/1500 W
 Frequency: 50/60 Hz
 Fuel: Diesel, Gasoline
 12/24V DC

Manufacturer: Luger Power Systems, Inc.
 2355 Westway Blvd., Suite 200, Santa Ana, CA 92706
 Phone: (949) 759-1000
 Fax: (949) 759-1001
 Web: www.lugerpowersystems.com
 Distributor: Luger Power Systems, Inc.
 1000 Westway Blvd., Suite 200, Santa Ana, CA 92706
 (949) 759-1000