

Performance Data

Study Rating	High Output	Medium Duty	Continuous Duty
Rated Output	41 hp (30 kW) at 2400 rpm	33 hp (24 kW) at 2400 rpm	27 hp (20 kW) at 2400 rpm
Max Output	46 hp (34 kW) at 2400 rpm	37 hp (27 kW) at 2400 rpm	30 hp (22 kW) at 2400 rpm
Maximum Torque	120 ft-lb at 2400 rpm	100 ft-lb at 2400 rpm	83 ft-lb at 2400 rpm
Full Consumption	4.1 gal (156 l) per hr	4.0 gal (152 l) per hr	3.8 gal (144 l) per hr
Efficiency*	75% at 2400 rpm 77% at 2000 rpm 78% at 1800 rpm	75% at 2400 rpm 77% at 2000 rpm 78% at 1800 rpm	74% at 2400 rpm 76% at 2000 rpm 77% at 1800 rpm

High Output

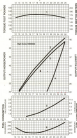


FIG. 1 (cont.)

Medium & Continuous Duty

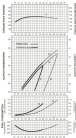


FIG. 2 (cont.)

Notes: 1. Always consult with your local distributor. 2. Always use the correct oil grade and viscosity for the engine. 3. Always use the correct oil grade and viscosity for the engine. 4. Always use the correct oil grade and viscosity for the engine. 5. Always use the correct oil grade and viscosity for the engine. 6. Always use the correct oil grade and viscosity for the engine. 7. Always use the correct oil grade and viscosity for the engine. 8. Always use the correct oil grade and viscosity for the engine. 9. Always use the correct oil grade and viscosity for the engine. 10. Always use the correct oil grade and viscosity for the engine.

