

Perkins MARINE POWER

6.3544(M)



Range 4 135

The Range 4 135 is the most advanced of marine engines available and delivers 135kW marine output. The compact construction and low noise characteristics make it the ideal outboard for recreational pleasure craft. It can be configured with either mechanical drive or electric start systems.

**100,7 kW/135
bhp**

General Data

Block design 6-cylinder 2400 cc / 145.5 cubic inches
Dry oil capacity 50 litres (13.2 US gal)
Water capacity 4.5 litres (1.2 US gal)
Cycle 4 stroke
Construction System Water cooled
Material Cast aluminium alloy
Fuel pump Rotary distributor type
Steering Via Remote
Starting Motor exchangeable

Height 610 mm (23.6 in) with alternator
Weight 160 kg (353 lb)
Clearance 60 mm (2.4 in) over
Maximal torque 60 Nm (44.3 lb-ft)
Construction 4 stroke
Installation weight 160 kg (353 lb)
Construction 2015 Plus 21 construction for outboard applications

6.3544(M) RANGE 4 135

24 24 = 55
per 1000

Typical Applications

The engine is suitable for continuously in the following applications:
Pumps, fans, blowers, transfer pumps and cranes,
Light mechanical drives (small agricultural tractors, small earth cutters and
excavator loaders, pile drivers, forklift tractors, forklifts).

Fuel Consumption

The table gives approximate fuel consumption for an engine operating at rated speed, rated power and typical values for average low-speed operating conditions.

RATED POWER		RATED FUEL CONSUMPTION		RATED SPEED		RATED TORQUE	
kW	hp	kg/hr	lit/hr	rpm	kg/hr	lit/hr	rpm
135	182	22.5	27.5	1800	22.5	27.5	1800
100	135	17.0	21.0	1500	17.0	21.0	1500
75	102	12.5	15.5	1200	12.5	15.5	1200

Options

Engine Head

Sea level and other corrections, alternative bracket arrangements, 12 or 18 volt alternative accessories (battery engine mounting, alternator/water pump, cooling fan drive, cooling water pump and, radiator connections), remote remote alternator power take-off/brush.

Engine Base

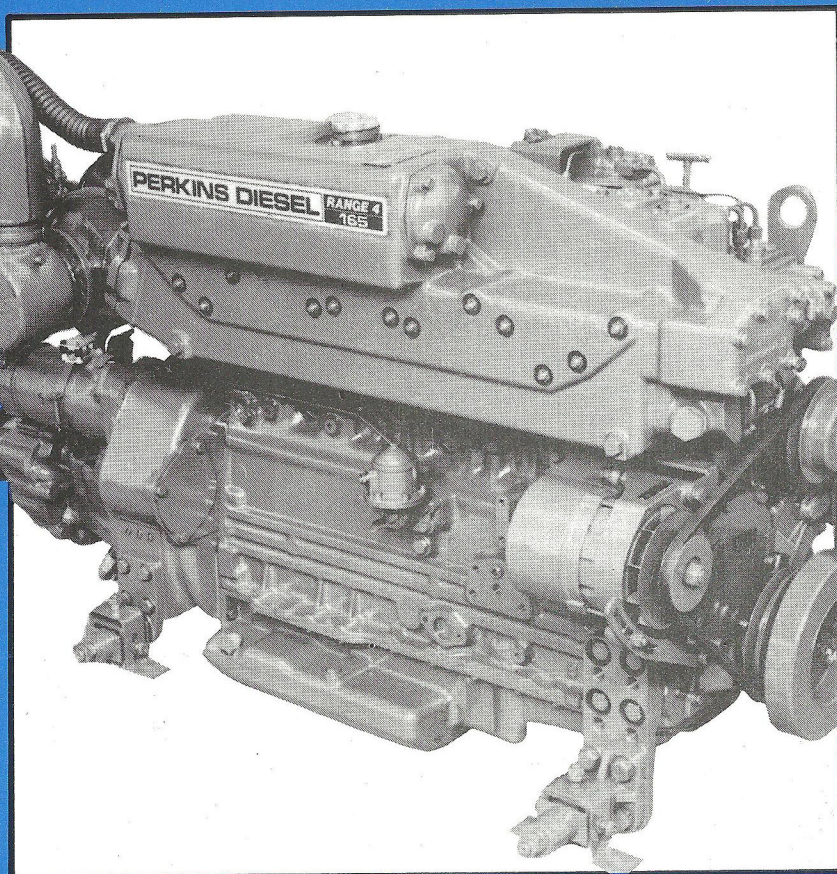
Optional accessories include: fuel injection with water/coolant pump sprayer, high speed centrifugal oil separator, low oil pressure, high speed fuel oil, oil/water separator, coolant injection, coolant.

Dimensions



Perkins MARINE POWER

T6.3544(M)



Range 4 165

A turbocharged six cylinder direct injection marine diesel, engineered by Perkins to successfully combine high performance with excellent durability. Features such as controlled expansion pistons cooled by oil spray jets, a deep skirted cylinder block designed for minimum distortion and a high capacity cooling system with twin thermostats ensure the T6.3544 stays ahead of the opposition. The low profile vertical cylinder configuration makes it ideal for conventional shaft drive, vee drive, or stern drive applications in all types of pleasure craft.

123 kW/165 bhp

General Data

Bore/Stroke: 98,4 mm (3.875 in)/127,0 mm (5.00 in)
No. of cylinders: 6 vertical in-line
Cubic capacity: 5,8 litres (353.8 in³)
Cycle: 4 stroke **Aspiration:** Turbocharged
Combustion System: Direct injection
Rotation: Anti-clockwise viewed from rear
Fuel pump: Rotary, four plunger type D.P.A.
Governing: Mechanical
Cooling: Heat exchanger/freshwater

Weight: 618 kg (1362 lb) with direct drive Borg Warner gearbox

Electrical: 12 volt or 24 volt system

Power take-off: Full engine torque from crankshaft extension

Installation angle: Max. static angle 17°. Underway 20°. Also 5° nose-down for vee-drive applications

 **Perkins**
Engines

T6.3544(M) RANGE 4 165

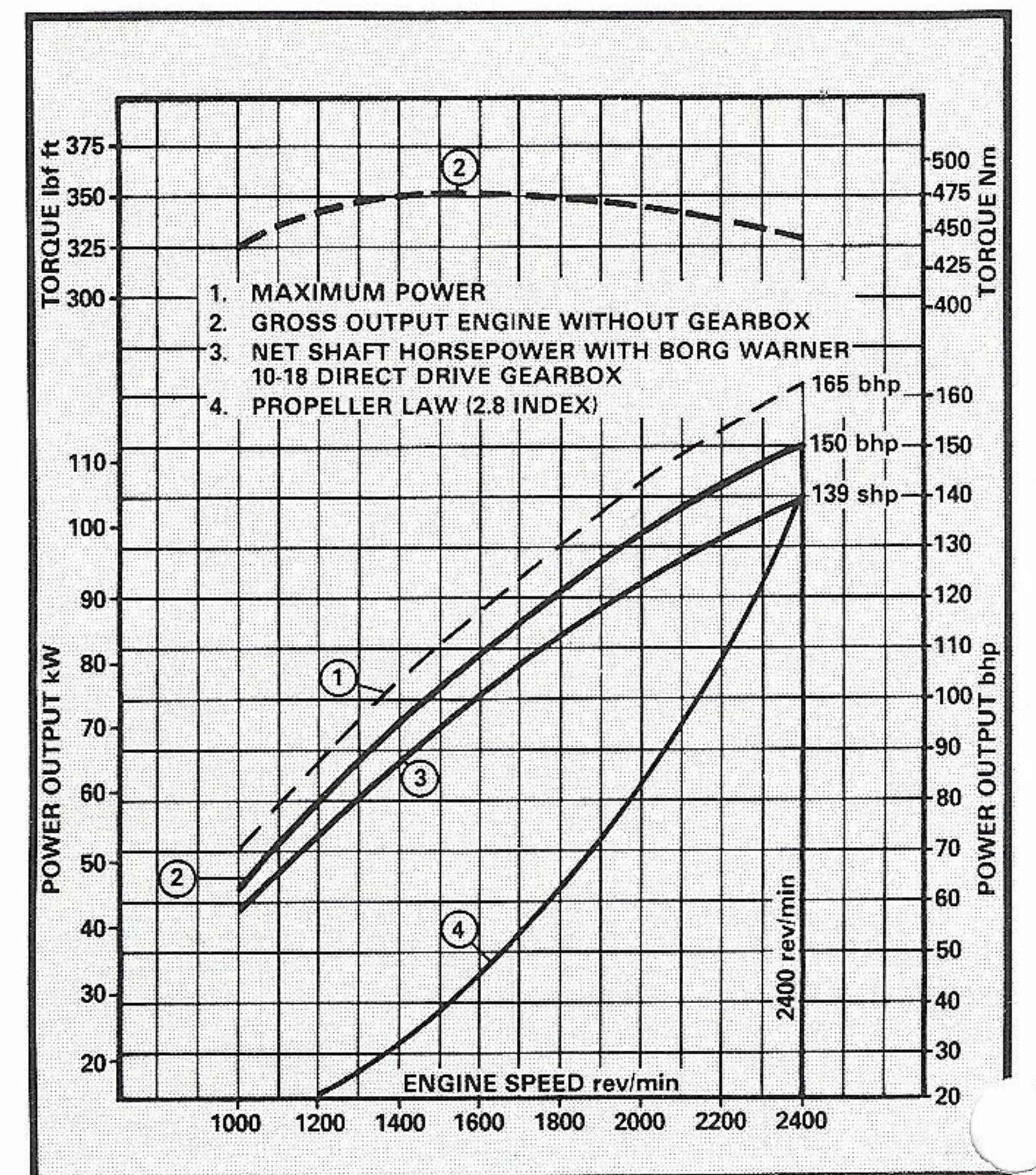
Pleasure Craft

This turbocharged engine is rated for continuous duty in all types of pleasure craft, as well as light duty commercial craft.

Fuel Consumption

The table gives approximate fuel consumption for an engine operating at rated speed, rated power and typical values for average lower-speed operating conditions.

Engine power		Full power Fuel consumption			Average operating Fuel consumption		
Speed rev/min	Load bhp	UK gals. per hr.	US gals. per hr.	litres per hr.	UK gals. per hr.	US gals. per hr.	litres per hr.
2400	150	6.9	8.3	32	3.0	3.6	14
2250	146	6.4	7.7	29	2.8	3.4	13
2000	137	5.8	7.0	26	2.5	3.0	11



Rating standard BS AU 141a : 1971

Pleasure craft propellers should be matched to achieve maximum rated engine speed under fully loaded boat conditions.

Engine as delivered from factory will be set to produce gross power output within manufacturing tolerance and run-in allowance.

Options

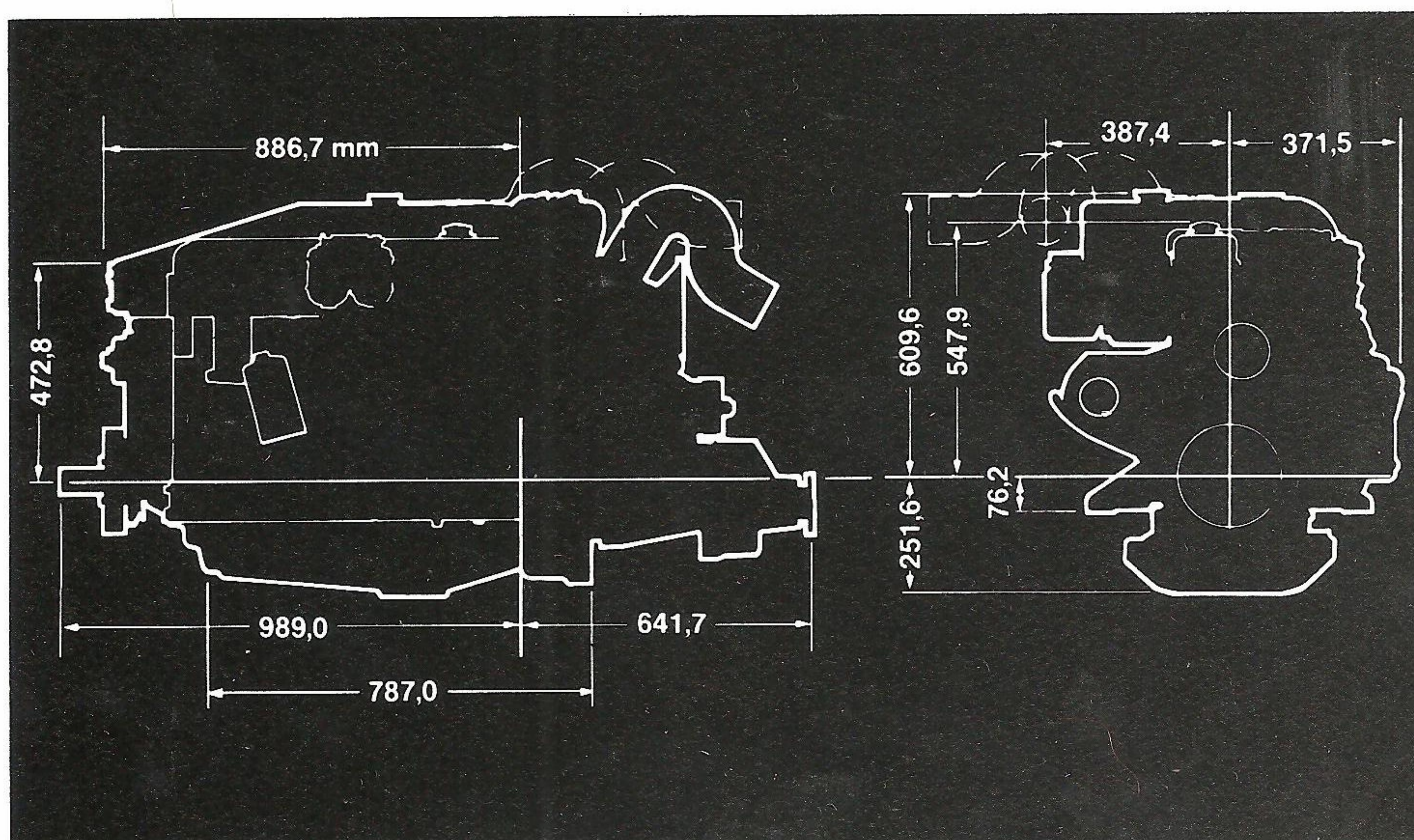
Engine fitted:

Borg Warner and other transmissions; alternative flywheels and housings; 12 or 24 volt alternators and starters; solid and flexible engine mountings; wet or dry exhaust outlets; sump drain pump; cold starting aid; calorifier connections; electric remote shutdown; power take-off shaft.

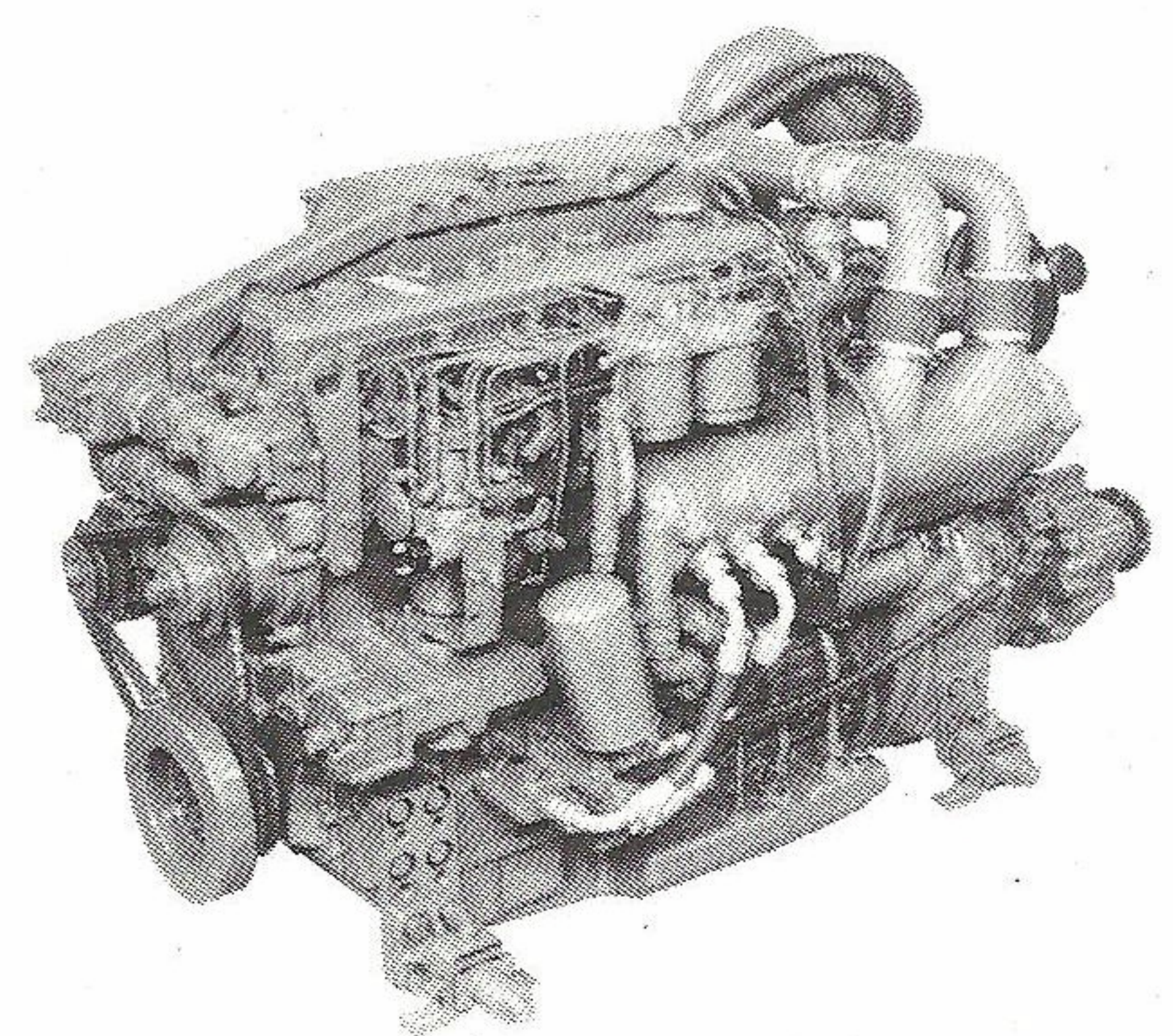
Supplied loose:

Electrical instruments (single or dual station); audible/visual alarm system for high water temperature/low oil pressure; bilge pump; tool kit; onboard spares kit; fuel pre-filter; gearbox output couplings; high quality propellers; sterngear; and installation fittings.

Dimensions



Demirhan Sadıkoğlu
2015



Perkins
Engines

Perkins MARINE POWER

T6.3544(M)

Range 4 240

Range 4 diesels are the industry's most advanced marine diesel engines. They are built for performance and designed to be the best marine engines ever built with excellent power-to-weight ratio, quiet operation, space efficient layout, simple design and excellent service availability. All diesels featured are designed to provide the best power for your pleasure.

240 bhp

General Data

Bore and Stroke: 3.875 in x 5.03 in
No. of cylinders: 6, in-line
Displacement: 204.0 cu in
Cycle: 4
Aspiration: Turbocharged
Intercooler: (optional) for seawater, 2 to 4 hp
Compression system: Direct injection
Compression ratio: 16.5:1
Rotation: L/R

Fuel pump: Rotary distributor type
Governor: Mechanical
Cooling: Heat exchanger, fresh water cooled
Weight: 1020 lb
Dimensions: 10 yds, 67 cm alternator
Power take off: Full engine torque from front
and rear main shaft
Installation angle: 0° to 15°

*Engines as delivered from factory will be set to produce the indicated horsepower rating.

 Perkins
Engines

T&3544(M) MARINE DIESEL

Design Features and Standard Equipment

Blocker Shield—The strength and rigidity of the block shield can be enhanced with additional blocking and the construction of an integral cast-in blocker, adding rigidity, reducing engine noise and vibration for longer engine life and greater economy.

Blocker Shield—Protects, particularly cast iron, the flywheel. Built-in protection. **Blocker Shield**—High strength cast iron flywheel reinforcement with integrated blocker for improved performance. Cast iron flywheel reinforcement with integrated blocker shield for longer engine life.

Blocker Shield—Protects cast iron flywheel reinforcement with integrated blocker shield for longer engine life. **Blocker Shield**—Protects cast iron flywheel reinforcement with integrated blocker shield for longer engine life.

Blocker Shield—Protects cast iron flywheel reinforcement with integrated blocker shield for longer engine life. **Blocker Shield**—Protects cast iron flywheel reinforcement with integrated blocker shield for longer engine life.

Blocker Shield—Protects cast iron flywheel reinforcement with integrated blocker shield for longer engine life. **Blocker Shield**—Protects cast iron flywheel reinforcement with integrated blocker shield for longer engine life.

Blocker Shield—Protects cast iron flywheel reinforcement with integrated blocker shield for longer engine life. **Blocker Shield**—Protects cast iron flywheel reinforcement with integrated blocker shield for longer engine life.

Blocker Shield—Protects cast iron flywheel reinforcement with integrated blocker shield for longer engine life. **Blocker Shield**—Protects cast iron flywheel reinforcement with integrated blocker shield for longer engine life.

Blocker Shield—Protects cast iron flywheel reinforcement with integrated blocker shield for longer engine life. **Blocker Shield**—Protects cast iron flywheel reinforcement with integrated blocker shield for longer engine life.

Blocker Shield—Protects cast iron flywheel reinforcement with integrated blocker shield for longer engine life. **Blocker Shield**—Protects cast iron flywheel reinforcement with integrated blocker shield for longer engine life.

Blocker Shield—Protects cast iron flywheel reinforcement with integrated blocker shield for longer engine life. **Blocker Shield**—Protects cast iron flywheel reinforcement with integrated blocker shield for longer engine life.

...continued from previous page

Blocker Shield—Protects cast iron flywheel reinforcement with integrated blocker shield for longer engine life. **Blocker Shield**—Protects cast iron flywheel reinforcement with integrated blocker shield for longer engine life.

Blocker Shield—Protects cast iron flywheel reinforcement with integrated blocker shield for longer engine life. **Blocker Shield**—Protects cast iron flywheel reinforcement with integrated blocker shield for longer engine life.

Blocker Shield—Protects cast iron flywheel reinforcement with integrated blocker shield for longer engine life. **Blocker Shield**—Protects cast iron flywheel reinforcement with integrated blocker shield for longer engine life.

Blocker Shield—Protects cast iron flywheel reinforcement with integrated blocker shield for longer engine life. **Blocker Shield**—Protects cast iron flywheel reinforcement with integrated blocker shield for longer engine life.

Blocker Shield—Protects cast iron flywheel reinforcement with integrated blocker shield for longer engine life. **Blocker Shield**—Protects cast iron flywheel reinforcement with integrated blocker shield for longer engine life.

Blocker Shield—Protects cast iron flywheel reinforcement with integrated blocker shield for longer engine life. **Blocker Shield**—Protects cast iron flywheel reinforcement with integrated blocker shield for longer engine life.

Blocker Shield—Protects cast iron flywheel reinforcement with integrated blocker shield for longer engine life. **Blocker Shield**—Protects cast iron flywheel reinforcement with integrated blocker shield for longer engine life.

Blocker Shield—Protects cast iron flywheel reinforcement with integrated blocker shield for longer engine life. **Blocker Shield**—Protects cast iron flywheel reinforcement with integrated blocker shield for longer engine life.

2400 rpm at 2000 rpm



Range 4 240 Performance

These graphs indicate the performance of the Perkins Range 4 marine diesel engine with full-rated engine output, or approximately 90% of rated engine output. Operating conditions shown are not limited to these ranges.

Optional Equipment

- 1. Diesel Engine—Perkins T&3544(M) Diesel Engine with 2400 rpm rated engine output and 2000 rpm rated engine output.
- 2. Marine Diesel Engine—Perkins T&3544(M) Diesel Engine with 2400 rpm rated engine output and 2000 rpm rated engine output.
- 3. Diesel Engine—Perkins T&3544(M) Diesel Engine with 2400 rpm rated engine output and 2000 rpm rated engine output.
- 4. Diesel Engine—Perkins T&3544(M) Diesel Engine with 2400 rpm rated engine output and 2000 rpm rated engine output.
- 5. Diesel Engine—Perkins T&3544(M) Diesel Engine with 2400 rpm rated engine output and 2000 rpm rated engine output.
- 6. Diesel Engine—Perkins T&3544(M) Diesel Engine with 2400 rpm rated engine output and 2000 rpm rated engine output.
- 7. Diesel Engine—Perkins T&3544(M) Diesel Engine with 2400 rpm rated engine output and 2000 rpm rated engine output.
- 8. Diesel Engine—Perkins T&3544(M) Diesel Engine with 2400 rpm rated engine output and 2000 rpm rated engine output.



Perkins Engines Company Ltd.
Perkins Engines Company Ltd.
Perkins Engines Company Ltd.
Perkins Engines Company Ltd.
Perkins Engines Company Ltd.

6.354V Drag Motor
engines

6.354V
VEHICLE DRAG



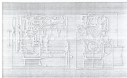
Model shown on page:

1. 1000 RPM
2. 1500 RPM
3. 2000 RPM
4. 2500 RPM
5. 3000 RPM

120 BHP 2800 RPM

Specification

Displacement	6.354 L (388 cu in)
Stroke	6.4 cm (2.5 in)
No. of cylinders	6 (injected inline)
Capacity	35.0 L (9.2 gal)
Control system	Direct Injection
Fuel rate	15.0 L (4.0 gal) / hr
Fuel pump type	Variable Injection Pump (VIP)
Typical installed weight	100 kg (220 lb) (includes 30 kg (66 lb) fuel tank)



GENERAL ARRANGEMENT

DISPLACEMENT	6.354 L (388 cu in)
STROKE	6.4 cm (2.5 in)
NO. OF CYLINDERS	6 (injected inline)
CAPACITY	35.0 L (9.2 gal)
CONTROL SYSTEM	Direct Injection
FUEL RATE	15.0 L (4.0 gal) / hr
FUEL PUMP TYPE	Variable Injection Pump (VIP)

FOR MORE INFORMATION, CONTACT:
 PERKINS ENGINE LIMITED
 1000 WESTERN AVENUE
 WILMINGTON, MA 01897

PERKINS ENGINE LIMITED

PERKINS ENGINE LIMITED

PERKINS ENGINE LIMITED

Perkins Arag Motors

1000 1000 1000 1000
engines

T6.3543V

VEHICLE DIESEL



1. Maximum power and torque are based on ISO 1585 (1995) test procedure.
2. Actual performance may vary due to operating conditions.
3. All values are for reference only.

155 Bhp 2600 Rpm

PERKINS MEASURING POINT

Specifications

Model	T6.3543V
Capacity	155 BHP (112 kW)
No. of cylinders	6
Injection system	Direct injection
Injection system	Electronic
B.M.P.	155 BHP (112 kW)
Max. Torque	200 Nm (147.23 ft-lb) at 1500 rpm
Typical installed weight	1100 kg (2425 lbs)



Modeling Applications

- 1. 155 BHP (112 kW)
- 2. 155 BHP (112 kW)
- 3. 155 BHP (112 kW)
- 4. 155 BHP (112 kW)
- 5. 155 BHP (112 kW)
- 6. 155 BHP (112 kW)
- 7. 155 BHP (112 kW)
- 8. 155 BHP (112 kW)

Perkins Engines Limited
1000 1000 1000 1000
1000 1000 1000 1000
1000 1000 1000 1000

