

STUART

MARINE ENGINES

TYPES P5 & P55

SPARE PARTS



When ordering spare ACRA P5 quote the full Engine Number as well as the Spare Part Number and description.

FAIRWAYS MARINE ENGINEERS
BATH PLACE WHARF, DEPPON ROAD,
MILNERS, DORSET (DNV 781)
Tel. (0421) 52866

Part Nos. marked * differ on engines with type suffix "A"—see special leaflet

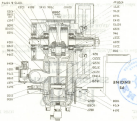
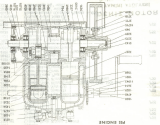
Part No.	Description	
1824*	Cylinder	
2124 jet	Cylinder Studs (4 long, 3 short)	
1825*	Cylinder	P55
4979 jet	Cylinder Studs (Over 12)	P55
4980 jet	Cylinder Studs (Long 12)	P55
1827	Cylinder Head	
1828	Cylinder Head	P55
2323 each	Cylinder Head Nuts (2)	
4147*	Cylinder Head Nut Union Studs	
8264 jet	Cylinder Head Stud 1 1/2	P55
2812 each	Cylinder Head Nut (1 1/2)	P55
4135	Cylinder Head Water Gasket	Surface 475, 1000 and 4211 on drawing
4211	Cylinder Head Water Gasket	
1714	Cylinder Drain Plug	
4715	Water Jacket Cover	
4750	Water Jacket Flange Ring and Bolts	
280	Expansion Chamber Cover	
4189 each	Expansion Chamber Cover Nut (4)	
3848*	Expansion Chamber Cover	P55
4189 each	Expansion Chamber Cover Nut (2)	P55
5004 each	Expansion Chamber Studs	
5004 each	Expansion Chamber Studs	P55
3849	Expansion Chamber Drain Plug	
1815	Exhaust Outlet	
4646	Exhaust Gasket	P55
1826	Exhaust Outlet Cover (with water level sight)	
4646	Exhaust Outlet Cover	P55
4823 jet	Exhaust Outlet Stud (2)	
4189 each	Exhaust Outlet Nut (2)	
4044	Water Gasket (4) Propeller Flange 4 1/2"	
3050	Water Ring (4) water	
3231	Water Ring (4) water	

DENİZ MOTOR

TAMER ATÖLYESİ

İstanbul ve Samsun Çarşısı

ROTOR (rotor in rotor)
 ROTOR (rotor in rotor)



221	Pin	
222	Pin	
223	Pin Pin Collar (2)	
224	Pin Pin Bush	
225	Connecting Rod with Race and Bush (10)	
226	Connecting Rod Guide Race	
227	Connecting Rod Bolts in Cap	
228	Crankpin with Race Bush	
229	Crankpin Race (2)	
230	Crankshaft, Flywheel End	
231	Crankshaft, Driving End (Remove Cover)	
232	Crankshaft, Driving End (Keep Chain)	
233	Crankshaft, Cover Section	

(Send Crankshaft and Connecting Rod to us for removal of any of these parts.)

234	Ball Bearing (2), Size 1 1/2" x 1 1/2" x 3/4"	
235	Spring (Flywheel), Crankshaft Cover	
236	Spring (Flywheel), Crankshaft Cover	
237	Flywheel	
238	Flywheel Key	
239	Flywheel Pin	
240	Compressor Sleeve, Short, Flywheel End	
241	Compressor Sleeve, Long, Driving End	
242	Compressor Seal (2)	
243	Flywheel Collar	
244	Compressor, Complete Assembly	
245	Compressor, Complete	
246	Compressor Clamping Bolt and Nut, 3/4"	
247	Compressor Clamping Bolt and Nut, 3/4"	
248	Compressor Bolt and Nut, 1" (2)	
249	Compressor Drive Pin	
250	Compressor Cover Pin (2)	
251	Pin (2)	
252	Spacer (Magneto Drive)	
253	Pin (Magneto Drive)	
254	Spring (Magneto Drive)	
255	Ball Race (1" x 1 1/2" x 1/2")	
256	Ball Race Housing	
257	Ball Race Balls (2)	

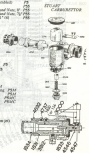
258	Steel Carburetor Body, 2" ID	
259	Steel Carburetor Body, 2" ID	
260	Throttle	
261	Throttle Collar and Screws	
262	Throttle Operating Pin	
263	Throttle Control Lever, P.M.	
264	Throttle Control Lever Spring, P.M.	
265	Throttle Control Lever Pin, P.M.	
266	Throttle Hand Lever, P.M.	
267	Pinion (Housing and Bolt), P.M.	
268	Pinion (Housing and Bolt), P.M.	
269	Pinion (Housing and Bolt), P.M.	
270	Pinion (Housing and Bolt), P.M.	
271	Pinion (Housing and Bolt), P.M.	
272	Pinion (Housing and Bolt), P.M.	
273	Pinion (Housing and Bolt), P.M.	
274	Pinion (Housing and Bolt), P.M.	
275	Pinion (Housing and Bolt), P.M.	
276	Pinion (Housing and Bolt), P.M.	
277	Pinion (Housing and Bolt), P.M.	
278	Pinion (Housing and Bolt), P.M.	
279	Pinion (Housing and Bolt), P.M.	
280	Pinion (Housing and Bolt), P.M.	
281	Pinion (Housing and Bolt), P.M.	
282	Pinion (Housing and Bolt), P.M.	
283	Pinion (Housing and Bolt), P.M.	
284	Pinion (Housing and Bolt), P.M.	
285	Pinion (Housing and Bolt), P.M.	
286	Pinion (Housing and Bolt), P.M.	
287	Pinion (Housing and Bolt), P.M.	
288	Pinion (Housing and Bolt), P.M.	
289	Pinion (Housing and Bolt), P.M.	
290	Pinion (Housing and Bolt), P.M.	
291	Pinion (Housing and Bolt), P.M.	
292	Pinion (Housing and Bolt), P.M.	
293	Pinion (Housing and Bolt), P.M.	
294	Pinion (Housing and Bolt), P.M.	
295	Pinion (Housing and Bolt), P.M.	
296	Pinion (Housing and Bolt), P.M.	
297	Pinion (Housing and Bolt), P.M.	
298	Pinion (Housing and Bolt), P.M.	
299	Pinion (Housing and Bolt), P.M.	
300	Pinion (Housing and Bolt), P.M.	
301	Pinion (Housing and Bolt), P.M.	
302	Pinion (Housing and Bolt), P.M.	
303	Pinion (Housing and Bolt), P.M.	
304	Pinion (Housing and Bolt), P.M.	
305	Pinion (Housing and Bolt), P.M.	
306	Pinion (Housing and Bolt), P.M.	
307	Pinion (Housing and Bolt), P.M.	
308	Pinion (Housing and Bolt), P.M.	
309	Pinion (Housing and Bolt), P.M.	
310	Pinion (Housing and Bolt), P.M.	
311	Pinion (Housing and Bolt), P.M.	
312	Pinion (Housing and Bolt), P.M.	
313	Pinion (Housing and Bolt), P.M.	
314	Pinion (Housing and Bolt), P.M.	
315	Pinion (Housing and Bolt), P.M.	
316	Pinion (Housing and Bolt), P.M.	
317	Pinion (Housing and Bolt), P.M.	
318	Pinion (Housing and Bolt), P.M.	
319	Pinion (Housing and Bolt), P.M.	
320	Pinion (Housing and Bolt), P.M.	
321	Pinion (Housing and Bolt), P.M.	
322	Pinion (Housing and Bolt), P.M.	
323	Pinion (Housing and Bolt), P.M.	
324	Pinion (Housing and Bolt), P.M.	
325	Pinion (Housing and Bolt), P.M.	
326	Pinion (Housing and Bolt), P.M.	
327	Pinion (Housing and Bolt), P.M.	
328	Pinion (Housing and Bolt), P.M.	
329	Pinion (Housing and Bolt), P.M.	
330	Pinion (Housing and Bolt), P.M.	
331	Pinion (Housing and Bolt), P.M.	
332	Pinion (Housing and Bolt), P.M.	
333	Pinion (Housing and Bolt), P.M.	
334	Pinion (Housing and Bolt), P.M.	
335	Pinion (Housing and Bolt), P.M.	
336	Pinion (Housing and Bolt), P.M.	
337	Pinion (Housing and Bolt), P.M.	
338	Pinion (Housing and Bolt), P.M.	
339	Pinion (Housing and Bolt), P.M.	
340	Pinion (Housing and Bolt), P.M.	
341	Pinion (Housing and Bolt), P.M.	
342	Pinion (Housing and Bolt), P.M.	
343	Pinion (Housing and Bolt), P.M.	
344	Pinion (Housing and Bolt), P.M.	
345	Pinion (Housing and Bolt), P.M.	
346	Pinion (Housing and Bolt), P.M.	
347	Pinion (Housing and Bolt), P.M.	
348	Pinion (Housing and Bolt), P.M.	
349	Pinion (Housing and Bolt), P.M.	
350	Pinion (Housing and Bolt), P.M.	
351	Pinion (Housing and Bolt), P.M.	
352	Pinion (Housing and Bolt), P.M.	
353	Pinion (Housing and Bolt), P.M.	
354	Pinion (Housing and Bolt), P.M.	
355	Pinion (Housing and Bolt), P.M.	
356	Pinion (Housing and Bolt), P.M.	
357	Pinion (Housing and Bolt), P.M.	
358	Pinion (Housing and Bolt), P.M.	
359	Pinion (Housing and Bolt), P.M.	
360	Pinion (Housing and Bolt), P.M.	
361	Pinion (Housing and Bolt), P.M.	
362	Pinion (Housing and Bolt), P.M.	
363	Pinion (Housing and Bolt), P.M.	
364	Pinion (Housing and Bolt), P.M.	
365	Pinion (Housing and Bolt), P.M.	
366	Pinion (Housing and Bolt), P.M.	
367	Pinion (Housing and Bolt), P.M.	
368	Pinion (Housing and Bolt), P.M.	
369	Pinion (Housing and Bolt), P.M.	
370	Pinion (Housing and Bolt), P.M.	
371	Pinion (Housing and Bolt), P.M.	
372	Pinion (Housing and Bolt), P.M.	
373	Pinion (Housing and Bolt), P.M.	
374	Pinion (Housing and Bolt), P.M.	
375	Pinion (Housing and Bolt), P.M.	
376	Pinion (Housing and Bolt), P.M.	
377	Pinion (Housing and Bolt), P.M.	
378	Pinion (Housing and Bolt), P.M.	
379	Pinion (Housing and Bolt), P.M.	
380	Pinion (Housing and Bolt), P.M.	
381	Pinion (Housing and Bolt), P.M.	
382	Pinion (Housing and Bolt), P.M.	
383	Pinion (Housing and Bolt), P.M.	
384	Pinion (Housing and Bolt), P.M.	
385	Pinion (Housing and Bolt), P.M.	
386	Pinion (Housing and Bolt), P.M.	
387	Pinion (Housing and Bolt), P.M.	
388	Pinion (Housing and Bolt), P.M.	
389	Pinion (Housing and Bolt), P.M.	
390	Pinion (Housing and Bolt), P.M.	
391	Pinion (Housing and Bolt), P.M.	
392	Pinion (Housing and Bolt), P.M.	
393	Pinion (Housing and Bolt), P.M.	
394	Pinion (Housing and Bolt), P.M.	
395	Pinion (Housing and Bolt), P.M.	
396	Pinion (Housing and Bolt), P.M.	
397	Pinion (Housing and Bolt), P.M.	
398	Pinion (Housing and Bolt), P.M.	
399	Pinion (Housing and Bolt), P.M.	
400	Pinion (Housing and Bolt), P.M.	

37 33333333333333

37

No. Ings. mod. (301)
No. Ings. mod. (1116)

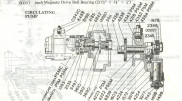
4000
4001
4002
4003
4004
4005
4006
4007
4008
4009
4010
4011
4012
4013
4014
4015
4016
4017
4018
4019
4020
4021
4022
4023
4024
4025
4026
4027
4028
4029
4030
4031
4032
4033
4034
4035
4036
4037
4038
4039
4040
4041
4042
4043
4044
4045
4046
4047
4048
4049
4050
4051
4052
4053
4054
4055
4056
4057
4058
4059
4060
4061
4062
4063
4064
4065
4066
4067
4068
4069
4070
4071
4072
4073
4074
4075
4076
4077
4078
4079
4080
4081
4082
4083
4084
4085
4086
4087
4088
4089
4090
4091
4092
4093
4094
4095
4096
4097
4098
4099
4100



Part No.

2008	Filter Cap and Spring	1.00
2009	Sealing Cap	1.00
2010	Sealing Cap Spring Washer	1.00
2011	Seal, Compression Type 20 FREDLL	1.00
2012	Seal, Compression Cont. Kit	1.00
2111A	Drive Tray (assembled by user control unit)	1.00
2111B	Air Blower Screw (long)	1.00
2111C	Air Blower Screw (short)	1.00
2112	Blower Spring	1.00
2113	Blower Distance Flange	1.00
2114	Air Blower with screws	1.00
2115	Blower	1.00
2116	Throttle Control Covering	1.00
2117	Throttle Control Pin and Pin	1.00
2118	Throttle Control Spring	1.00
2119	Throttle Control Seal Allen CS	1.00
2120	Throttle Link And Air Compression	1.00
2121	Throttle Lever	1.00
2122	Throttle Pin, Short	1.00
2123	Throttle Pin, Long	1.00
2124	Link and Supporter	1.00
2125	H.T. Lever	1.00
A 11 1892	Magneto (Wet), Duplex Star 24	1.00
A 11 1893	Magneto (Wet), Duplex Star 24	1.00
2131	Magneto Coupling Bolt	1.00
2132	Magneto Coupling Nut Wash	1.00
2133	Magneto Cranking Link (no shaft)	1.00
2134	Magneto Crank Pin	1.00
2135	Magneto Crank Pin	1.00
2136	Magneto Crank Pin	1.00
2137	Magneto Crank Pin	1.00
2138	Magneto Crank Pin	1.00
2139	Magneto Crank Pin	1.00
2140	Magneto Crank Pin	1.00
2141	Magneto Drive Shaft	1.00
2142	Magneto Drive Shaft	1.00
2143	Magneto Drive Shaft	1.00
2144	Magneto Drive Shaft	1.00
2145	Magneto Drive Shaft	1.00
2146	Magneto Drive Shaft	1.00
2147	Magneto Drive Shaft	1.00
2148	Magneto Drive Shaft	1.00
2149	Magneto Drive Shaft	1.00
2150	Magneto Drive Shaft	1.00
2151	Magneto Drive Shaft	1.00
2152	Magneto Drive Shaft	1.00
2153	Magneto Drive Shaft	1.00
2154	Magneto Drive Shaft	1.00
2155	Magneto Drive Shaft	1.00
2156	Magneto Drive Shaft	1.00
2157	Magneto Drive Shaft	1.00
2158	Magneto Drive Shaft	1.00
2159	Magneto Drive Shaft	1.00
2160	Magneto Drive Shaft	1.00
2161	Magneto Drive Shaft	1.00
2162	Magneto Drive Shaft	1.00
2163	Magneto Drive Shaft	1.00
2164	Magneto Drive Shaft	1.00
2165	Magneto Drive Shaft	1.00
2166	Magneto Drive Shaft	1.00
2167	Magneto Drive Shaft	1.00
2168	Magneto Drive Shaft	1.00
2169	Magneto Drive Shaft	1.00
2170	Magneto Drive Shaft	1.00
2171	Magneto Drive Shaft	1.00
2172	Magneto Drive Shaft	1.00
2173	Magneto Drive Shaft	1.00
2174	Magneto Drive Shaft	1.00
2175	Magneto Drive Shaft	1.00
2176	Magneto Drive Shaft	1.00
2177	Magneto Drive Shaft	1.00
2178	Magneto Drive Shaft	1.00
2179	Magneto Drive Shaft	1.00
2180	Magneto Drive Shaft	1.00
2181	Magneto Drive Shaft	1.00
2182	Magneto Drive Shaft	1.00
2183	Magneto Drive Shaft	1.00
2184	Magneto Drive Shaft	1.00
2185	Magneto Drive Shaft	1.00
2186	Magneto Drive Shaft	1.00
2187	Magneto Drive Shaft	1.00
2188	Magneto Drive Shaft	1.00
2189	Magneto Drive Shaft	1.00
2190	Magneto Drive Shaft	1.00
2191	Magneto Drive Shaft	1.00
2192	Magneto Drive Shaft	1.00
2193	Magneto Drive Shaft	1.00
2194	Magneto Drive Shaft	1.00
2195	Magneto Drive Shaft	1.00
2196	Magneto Drive Shaft	1.00
2197	Magneto Drive Shaft	1.00
2198	Magneto Drive Shaft	1.00
2199	Magneto Drive Shaft	1.00
2200	Magneto Drive Shaft	1.00

OSCILLATING PLATE



Lot No. _____

Lot No. _____

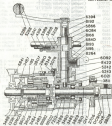
Square Screws

Part No.	Description
4080	Flange Gear Cover
4081	Flange Gear Cover Locking Collar
4100	Flange Wood
4101	Flange Wood Nut and Washer
4110	Flange
4111	Flange
4112	Flange Lock with Bush
4113	Flange Lock Bush
4114	Flange Lock Nut Bearing of 1/2" M x 1/2"
4115	Flange Bearing Steel Washer
4116	Flange Bearing Flange Screw
4117	Flange Bearing Flange Cap
4118	Flange Bearing Flange Cap Screws (20)
4119	Flange Bush
4120	Flange Flange
4121	Flange Flange Pin with Split Pin
4122	Flange Oil Seal Nut
4123	Flange Packing
4124	Yalve (2)
4125	Yalve Case (2)
4126	Pin with Bush (Group to exhaust outlet cover)
4127	Pin Exhaust Body
4128	Pin with nut (Group to exhaust outlet cover)
4129	Pin Exhaust Body



INTERNAL MOTOR

REVERSE GEAR BOX



4130 Gearbox Case
4131 Gearbox Case Flange Screws

4132 Gearbox Case Flange Screws

Part No.	Description	QTY	PRICE
300	Filing Plug		0.10
300	Filing Plug		0.10
310	Filing Plug		0.10
320	Forward Case		0.10
330	Forward Case Key (L)		0.10
340	Forward Case Nut		0.10
350	Clutch Body		0.10
360	Clutch Housing with Detent Ring		0.10
370	Clutch Housing Bolts and Nut (L)		0.10
380	For Wheel with Splined Clutch		0.10
390	Clutch Bolt		0.10
400	Clutch Key		0.10
410	Clutch Pinion (L)		0.10
420	Clutch Race		0.10
430	Clutch		0.10
440	Clutch Flange Bolt		0.10
450	Black Ball Bearing (2) 1 1/2" x 7/8" x 3/4"		0.10
460	Black Ball Bearing, Detent Spring		0.10
470	Black Ball Bearing, Washers (2)		0.10
480	Clutch Pin Spring		0.10
490	Clutch Pin Spring		0.10
500	Clutch Key		0.10
510	Clutch		0.10
520	Clutch Pin		0.10
530	Clutch Bolts with Nuts and Washers 1/2" (L)		0.10
540	Clutch Propeller Shaft (L)		0.10
550	Clutch Propeller Shaft (L)		0.10
560	Clutch Propeller Shaft (L)		0.10
570	Clutch Key		0.10
580	Clutch Screw (L)		0.10
590	Clutch Spring		0.10
600	Clutch Spring		0.10
610	Clutch Spring		0.10
620	Clutch Spring		0.10
630	Clutch Spring		0.10
640	Clutch Spring		0.10
650	Clutch Spring		0.10
660	Clutch Spring		0.10
670	Clutch Spring		0.10
680	Clutch Spring		0.10
690	Clutch Spring		0.10
700	Clutch Spring		0.10
710	Clutch Spring		0.10
720	Clutch Spring		0.10
730	Clutch Spring		0.10
740	Clutch Spring		0.10
750	Clutch Spring		0.10
760	Clutch Spring		0.10
770	Clutch Spring		0.10
780	Clutch Spring		0.10
790	Clutch Spring		0.10
800	Clutch Spring		0.10
810	Clutch Spring		0.10
820	Clutch Spring		0.10
830	Clutch Spring		0.10
840	Clutch Spring		0.10
850	Clutch Spring		0.10
860	Clutch Spring		0.10
870	Clutch Spring		0.10
880	Clutch Spring		0.10
890	Clutch Spring		0.10
900	Clutch Spring		0.10
910	Clutch Spring		0.10
920	Clutch Spring		0.10
930	Clutch Spring		0.10
940	Clutch Spring		0.10
950	Clutch Spring		0.10
960	Clutch Spring		0.10
970	Clutch Spring		0.10
980	Clutch Spring		0.10
990	Clutch Spring		0.10
1000	Clutch Spring		0.10

PLANTER
PLANTER

Stuart Stern Gear and Installation Equipment

When ordering specify all MATS quote the full Engine Number and the Speed Part Number and description.



COOLING WATER EQUIPMENT

14071	Brass seawater pump and strainer with pump 12" B.S.P.
14072	Brass seawater pump and strainer with pump 12" B.S.P.
14073	2" coils, upper water pump Per N.
14074	1" coils, upper water pump Per N.
14099	1" Navy rubber water pipe Per N.
14297	Brass union 1" B.S.P. (1" Navy Flange)
15041	Brass union 1" B.S.P. (1" Navy Flange)
202115	Set of helix pumping equipment for seawater 20211
202118	Set of helix pumping equipment for seawater 20211

EXHAUST PIPES AND MUFFLERS

8275	12" coils, 2 1/2" copper exhaust pipe with nuts
8111 A	12" coils, copper exhaust pipe Per N.
8889	12" coils, 2 1/2" copper exhaust pipe with nuts
8889 A	12" coils, copper exhaust pipe Per N.
8887	12" coils, 2 1/2" copper exhaust pipe with nuts
8887 A	12" coils, copper exhaust pipe Per N.
8885	12" coils, 2 1/2" copper exhaust pipe with nuts
8885 A	12" coils, copper exhaust pipe Per N.
8814	12" Navy rubber exhaust pipe (1/2" exhaust only) Per N.
8814	12" Navy rubber exhaust pipe (3/4" exhaust only) Per N.
1812	Brass elbow 12" x 4" (1" and 1" B.S.P. connections)
1813	Brass elbow 12" x 4" (1" and 1" B.S.P. connections)
1817	Brass elbow 12" x 4" (1" and 1" B.S.P. connections)
1829	Rubber elbow 11" x 3" (1" and 1" B.S.P. connections)

BRASS FITTINGS

1261A	1" B.S.P. water union straddling with nut and washer
1261B	1" B.S.P. water union straddling with nut and washer
1261C	1" B.S.P. exhaust straddling with nut and washer
1261D	1" B.S.P. exhaust straddling with nut and washer
1413A	12" B.S.P. exhaust straddling with nut and washer (for flexible pipe)
1413B	12" B.S.P. exhaust straddling with nut and washer (for flexible pipe)

FUEL TANKS AND ACCESSORIES

1184	1 gal. Petrol Tank & Cap (Horizontal Filler)	12" x 7 1/2" x 4 1/2" (4.5 Liters)
1184B	1 gal. Petrol Tank & Cap (Horizontal Filler)	12" x 11 1/2" x 4 1/2" (4.5 Liters)
1185	1 gal. Petrol Tank & Cap (Horizontal Filler)	12 1/2" x 11 1/2" x 4 1/2" (4.5 Liters)
9108	1 gal. Petrol Tank & Cap (Vertical Filler)	10 1/2" x 11 1/2" x 4 1/2" (4.5 Liters)
1186	4 gal. Petrol Tank & Cap (Horizontal Filler)	12 1/2" x 14 1/2" x 7 1/2" (17.0 Liters)
9112	4 gal. Petrol Tank & Cap (Vertical Filler)	12 1/2" x 14 1/2" x 7 1/2" (17.0 Liters)
30778D	4 1/2 gal. Diesel Tank & Cap (Horizontal Filler)	18 1/2" x 18 1/2" x 8 1/2" (17.0 Liters)
4054B	10 gal. Diesel Tank & Cap (Horizontal Filler)	24" x 18 1/2" x 8 1/2" (18.5 Liters)
00001	Chaff cap and in-line filter assembly	
60 288	Copper fuel pipe, 3/4" coils, Per N.	
10860	Diaphragm fuel tap 1" B.S.P.	
10862/2743	Metal braided flexible fuel pipe, 12" with unions to suit coupling to copper fuel pipe	
12750	Brass output pump with 12" output tube	

DENİZ MOTOR

TAMİRİ ATOLYESİ

İstanbul ve Zeytin (Yakar)



18000	Remote throttle control, 4" cable	
18002	Remote throttle control, 1/2" cable	
18003	Remote throttle control, 4" cable, P4 engine with 301 carburetor	
18004	Remote throttle control, 1/2" cable, P4 engine with 301 carburetor	
18005	Remote throttle control, 4" cable, P44 engine with 34 F104 carburetor	
18006	Remote throttle control, 1/2" cable, P44 engine with 34 F104 carburetor	
18007	Remote throttle control, 4" cable, P4 and P44 engines with 8422 carburetor	
18008	Remote throttle control, 1/2" cable, P4 and P44 engines with 8422 carburetor	

ROTOR MOTOR

STERN GEAR—4" SHAFTING

18009	Standard steel shaft, 1/2" dia. "A", with nut and split pin	
18010	Standard steel shaft, 1/2" dia. "C"	For 8.4000
48704	Standard oil-lubed bearing, complete	
48804	Standard oil-lubed bearing, with rubber liner	
30007B	Outboard bearing with gland—recommended for sandy waters	
1736	Bearing wood spline	
1401	Intermittent propeller shaft bearing	

STERN GEAR—3" SHAFTING

18114	M.S. shaft, 1/2" dia. "A", with nut, keys and split pin	
18115	Standard steel shaft, 1/2" dia. with nut and keys	
18014A	Standard steel shaft, 1/2" dia. "A", with nut, keys and split pin	
18116	Standard steel shaft, 1/2" dia. "C"	For 8.4000
18117	Standard oil-lubed bearing, complete	
18118	Flexible oil-lubed bearing, complete	
48805	Standard oil-lubed bearing, with rubber liner	
30007C	Outboard bearing with gland—recommended for sandy waters	
1736	Bearing wood spline	
1401	Intermittent propeller shaft bearing	

STERN GEAR—2" SHAFTING

18114A	M.S. shaft, 1/2" dia. "A", with nut, keys and split pin	
18115A	Standard steel shaft, 1/2" dia. with nut and keys	
18114B	Standard steel shaft, 1/2" dia. "A", with nut, keys and split pin	
18116A	Standard steel shaft, 1/2" dia. "C"	For 8.4000
18117A	Standard oil-lubed bearing, complete	
18118A	Flexible oil-lubed bearing, with rubber liner	
30007D	Outboard bearing with gland—recommended for sandy waters	
48705	Adjustable shaft lag	
1402	Adjustable "A" bracket, with rubber liner	
1737	Bearing wood spline	
1402	Intermittent propeller shaft bearing	

Water

8.4000

18114A
18115A
18114B
18116A
18117A
18118A

48705
1402
1737
1402

STEER GEAR—(2) MOUNTING

Part No.

4295A S.A.E. shaft, 35/32 diam. "A", with nut, keys and split pin

1825A Standard steel shaft, 45/32 diam. "A" with nut, keys and split pin

1873 Standard steel tube, 1 1/2" dia. \times 1 1/2" diam. "C"
Part 3, 4295A

4311A Standard tapered bearing, stainless

4289B Standard oil-wash bearing, with rubber liner

208442 Double-end bearing with gasket—recommended for muddy water

7575 Bearing wiper seal

2480 Intermediate propeller shaft bearing



Dimensions of Standard Steer Gear

Part No.		A	B	C	D	E	F	G	H	J	K	L1	L2	M	N	P	Notes
4'	Inches M.M.	50 1274	74 187	11 28	352 895	25 63	24 61	28 71	24 61	28 71	8 20	8 20	8 20	5 12	5 12	5 12	K&MC
4'	Inches M.M.	50 1274	74 187	11 28	352 895	25 63	24 61	28 71	24 61	28 71	8 20	10 25	10 25	5 12	5 12	5 12	MG
4'	Inches M.M.	71 1803	94 239	12 30	352 895	25 63	24 61	28 71	24 61	28 71	8 20	10 25	10 25	5 12	5 12	5 12	79 192
4'	Inches M.M.	25 635	15 38	12 30	18 45	25 63	22 55	13 33	16 40	16 40	8 20	12 30	12 30	3 7	3 7	3 7	SG4.9 SG4.22
4'	Inches M.M.	50 1274	74 187	11 28	154 390	4 10	4 10	4 10	24 61	16 40	8 20	16 40	16 40	5 12	5 12	5 12	79B
4'	Inches M.M.	71 1803	94 239	12 30	154 390	4 10	4 10	4 10	24 61	16 40	8 20	12 30	12 30	5 12	5 12	5 12	79B 79BMC 814
4'	Inches M.M.	25 635	15 38	12 30	144 365	4 10	4 10	4 10	16 40	12 30	8 20	16 40	16 40	3 7	3 7	3 7	SG4.22
4'	Inches M.M.	71 1803	94 239	12 30	154 390	4 10	4 10	4 10	24 61	16 40	8 20	12 30	12 30	5 12	5 12	5 12	79B 814MC 814B

Dimension "A"—For K&MC and SG4.22 the shaft is 74" long, the nut being 5" from the face of the coupling. For other general engines the shaft is 114" long, the nut being 5" from the face of the coupling. Both diesel engines have a shaft 48" long.

L1 Three-bladed propeller is specified. L2 Two-bladed propeller can be supplied.

* Reduced to 74" for J.B.L.P. engine with auxiliary steering.

† 12" (305 mm.) for 2750 (2) shafts, 12" (305 mm.) for 2 bearings.

429 propeller are supplied with 1-12 Admiralty taper.

Propeller and coupling assembly only is fitted engine only.

Part No.

14208	Thermostat
21408	Thermostat Housing
21140	Thermostat Cover
21417	Thermostat Cover
14411	Sealing Ring
11111	Valve
476	Valve Spring
11114	Valve Cap
64411 each	Sealing Screen (2)
14411	Wedge Pin with Snap Union
14448	Wedge Pin with Snap Union
14449 each	Snap Union (2)
12741 each	Snap Union Nut (1)
14411 each	Snap Union Washer (1)

KNEEING CLUTCH (over-geat model)

Model 2000	2000	Clutch	1141
10746	10746	Key	1141
10746 each	10746	Key	1141
Model 1200	1200	Body Allen Screw (2)	1141
1040	1040	Clutch	1141
1040 each	1040	Clutch	1141
1041	1041	Body Allen Screw (2)	1141
1041 each	1041	Body Allen Screw (2)	1141
1041	1041	Clutch Pin (2)	1141
1041 each	1041	Clutch Pin (2)	1141
1041	1041	Clutch Pin Sleeve (2)	1141
1041 each	1041	Clutch Pin Sleeve (2)	1141
1041	1041	Ball Bearing (2)	1141
1041 each	1041	Ball Bearing (2)	1141
1041	1041	Ball Bearing Shim	1141
1041 each	1041	Ball Bearing Shim	1141
1041	1041	Ball Bearing Washer	1141
1041 each	1041	Ball Bearing Washer	1141
1041	1041	Ball Bearing Nut	1141
1041 each	1041	Ball Bearing Nut	1141
1041	1041	Shim (2)	1141
1041 each	1041	Shim (2)	1141
1041	1041	Shim Spring (2)	1141
1041 each	1041	Shim Spring (2)	1141
1041	1041	Clutch Key	1141
1041 each	1041	Clutch Key	1141
1041	1041	Clutch Pin (2)	1141
1041 each	1041	Clutch Pin (2)	1141
1041	1041	Clutch Pin Sleeve (2)	1141
1041 each	1041	Clutch Pin Sleeve (2)	1141
1041	1041	Clutch Washer (2)	1141
1041 each	1041	Clutch Washer (2)	1141

CENTRIFUGAL CLUTCH (non-covering engine, 2000)

2000	2000	Clutch Nut	1141
2000	2000	Clutch Washer	1141
2000	2000	Clutch Cover with Magnet Plate	1141
2000	2000	Body	1141
2000	2000	Body Key	1141
2000	2000	Shim (2)	1141
2000	2000	Shim Pin (2)	1141
2000	2000	Clutch (2)	1141
2000	2000	Clutch Washer Plate (2)	1141
2000	2000	Clutch with Spring Band	1141
2000	2000	Clutch with Spring Band	1141
2000	2000	Clutch Key	1141
2000	2000	Clutch Key	1141
2000	2000	Clutch Pin (2)	1141
2000	2000	Clutch Pin Sleeve (2)	1141

FERNAL PUMP

1	1/2" Dia. Steel	2	1/2" Dia. Steel	3	1/2" Dia. Steel	4	1/2" Dia. Steel	5	1/2" Dia. Steel
6	1/2" Dia. Steel	7	1/2" Dia. Steel	8	1/2" Dia. Steel	9	1/2" Dia. Steel	10	1/2" Dia. Steel
11	1/2" Dia. Steel	12	1/2" Dia. Steel	13	1/2" Dia. Steel	14	1/2" Dia. Steel	15	1/2" Dia. Steel
16	1/2" Dia. Steel	17	1/2" Dia. Steel	18	1/2" Dia. Steel	19	1/2" Dia. Steel	20	1/2" Dia. Steel
21	1/2" Dia. Steel	22	1/2" Dia. Steel	23	1/2" Dia. Steel	24	1/2" Dia. Steel	25	1/2" Dia. Steel
26	1/2" Dia. Steel	27	1/2" Dia. Steel	28	1/2" Dia. Steel	29	1/2" Dia. Steel	30	1/2" Dia. Steel
31	1/2" Dia. Steel	32	1/2" Dia. Steel	33	1/2" Dia. Steel	34	1/2" Dia. Steel	35	1/2" Dia. Steel
36	1/2" Dia. Steel	37	1/2" Dia. Steel	38	1/2" Dia. Steel	39	1/2" Dia. Steel	40	1/2" Dia. Steel
41	1/2" Dia. Steel	42	1/2" Dia. Steel	43	1/2" Dia. Steel	44	1/2" Dia. Steel	45	1/2" Dia. Steel
46	1/2" Dia. Steel	47	1/2" Dia. Steel	48	1/2" Dia. Steel	49	1/2" Dia. Steel	50	1/2" Dia. Steel

ADJUST



1	1/2" Dia. Steel	2	1/2" Dia. Steel	3	1/2" Dia. Steel	4	1/2" Dia. Steel	5	1/2" Dia. Steel
6	1/2" Dia. Steel	7	1/2" Dia. Steel	8	1/2" Dia. Steel	9	1/2" Dia. Steel	10	1/2" Dia. Steel
11	1/2" Dia. Steel	12	1/2" Dia. Steel	13	1/2" Dia. Steel	14	1/2" Dia. Steel	15	1/2" Dia. Steel
16	1/2" Dia. Steel	17	1/2" Dia. Steel	18	1/2" Dia. Steel	19	1/2" Dia. Steel	20	1/2" Dia. Steel
21	1/2" Dia. Steel	22	1/2" Dia. Steel	23	1/2" Dia. Steel	24	1/2" Dia. Steel	25	1/2" Dia. Steel
26	1/2" Dia. Steel	27	1/2" Dia. Steel	28	1/2" Dia. Steel	29	1/2" Dia. Steel	30	1/2" Dia. Steel
31	1/2" Dia. Steel	32	1/2" Dia. Steel	33	1/2" Dia. Steel	34	1/2" Dia. Steel	35	1/2" Dia. Steel
36	1/2" Dia. Steel	37	1/2" Dia. Steel	38	1/2" Dia. Steel	39	1/2" Dia. Steel	40	1/2" Dia. Steel
41	1/2" Dia. Steel	42	1/2" Dia. Steel	43	1/2" Dia. Steel	44	1/2" Dia. Steel	45	1/2" Dia. Steel
46	1/2" Dia. Steel	47	1/2" Dia. Steel	48	1/2" Dia. Steel	49	1/2" Dia. Steel	50	1/2" Dia. Steel

TOOTHED INSTALLATION

STEEL CASE

1	1/2" Dia. Steel	2	1/2" Dia. Steel	3	1/2" Dia. Steel	4	1/2" Dia. Steel
5	1/2" Dia. Steel	6	1/2" Dia. Steel	7	1/2" Dia. Steel	8	1/2" Dia. Steel
9	1/2" Dia. Steel	10	1/2" Dia. Steel	11	1/2" Dia. Steel	12	1/2" Dia. Steel
13	1/2" Dia. Steel	14	1/2" Dia. Steel	15	1/2" Dia. Steel	16	1/2" Dia. Steel
17	1/2" Dia. Steel	18	1/2" Dia. Steel	19	1/2" Dia. Steel	20	1/2" Dia. Steel
21	1/2" Dia. Steel	22	1/2" Dia. Steel	23	1/2" Dia. Steel	24	1/2" Dia. Steel
25	1/2" Dia. Steel	26	1/2" Dia. Steel	27	1/2" Dia. Steel	28	1/2" Dia. Steel
29	1/2" Dia. Steel	30	1/2" Dia. Steel	31	1/2" Dia. Steel	32	1/2" Dia. Steel
33	1/2" Dia. Steel	34	1/2" Dia. Steel	35	1/2" Dia. Steel	36	1/2" Dia. Steel
37	1/2" Dia. Steel	38	1/2" Dia. Steel	39	1/2" Dia. Steel	40	1/2" Dia. Steel
41	1/2" Dia. Steel	42	1/2" Dia. Steel	43	1/2" Dia. Steel	44	1/2" Dia. Steel
45	1/2" Dia. Steel	46	1/2" Dia. Steel	47	1/2" Dia. Steel	48	1/2" Dia. Steel
49	1/2" Dia. Steel	50	1/2" Dia. Steel	51	1/2" Dia. Steel	52	1/2" Dia. Steel

FOR PROPELLERS, SHAFTS, OTHER TURBINE, REACTORS, TANKS
See Page 20

Part No.

4204	Inboard Bearing	Lock Nut, all series	
3331	Inboard Bearing	Clamp Nut, PMA	1000
1189D	Inboard Bearing	Clamp Ring	1000
4134-17	Inboard Bearing	Packing	1000
8389	Inboard Bearing	Clamp Nut, PMA, PMA	1000
11418	Inboard Bearing	Clamp Ring	1000
12042D	Inboard Bearing	Packing	1000
8390	Inboard Bearing	Clamp Nut, PMA	1000
11419D	Inboard Bearing	Clamp Ring	1000
4134-20	Inboard Bearing	Packing	1000
3627	Inboard Bearing	Greaser	1000
7204	Outboard Bearing	Rubber Seal only, PMA	1000
7201	Outboard Bearing	Rubber Seal only, PMA, PMA	1000
7201	Outboard Bearing	Rubber Seal only, PMA	1000



DIMENSIONS OF STANDARD STERN GEAR

Engine		A	B	C	D	E	F	G	H	J	K	L ¹	L ²	M	N	P
PMA PMA	Inches	72	84	12	100	24	24	11	14	14	4	18	11	3	24	24
PMA	Inches	72	84	12	78	4	44	44	14	14	0	14	14	3	4	
PMA	Inches	72	84	12	88	4	44	44	14	14	0	12	14	3	4	
PMA	Inches	72	9	12	30	40	40	40	24	14	14	18	18	3	4	

¹Three-bladed propeller. ²Two-bladed propeller can be supplied when desired.

Dimension A—The shaft is 1 1/2" diam. 1/8" and being 2" from the flange of the coupling.

INSTALLATION EQUIPMENT

1200	Exhaust Silencer, 38" x 4"	
1202	Exhaust Silencer, 38" x 2"	
3007	Exhaust Pipe 1 1/2" to Silencer (38") with Nuts	700
3008	Exhaust Pipe 1 1/2" to Silencer (38") with Nuts	700
3009	Exhaust Tail Pipe 1 1/2" with Nuts	
1247 each	Exhaust Union Nuts (for Silencer) (2)	
1248 each	Exhaust Union Nuts (for Silencer) (2)	
1249 each	Exhaust Union Nuts (Tail Pipe) (2)	
1250	Exhaust Hose Fitting Washer	
1251	Exhaust Hose Fitting Locknut	

FOR PROPELLERS, SHAFTS, STERN TUBES, SLACKERS, TANKS

—See Part 20

