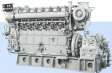


# YANMAR

## MARINE PROPULSION DIESEL ENGINE

### 1000-1200ps

### M220



## The Fuel Saving Medium-Speed Diesel for the Age of Energy Conservation

It has taken all of Yanmar's 50 years of experience to produce something like this. The engine named M220 is a new but really old. Working since the 1920s, energy saving has been its main theme.

### Best Bore and Compression—Only 22% SFC

All the latest technologies have been used to reduce the fuel consumption to 22% SFC. The engine has 1600 cc per cylinder, the best fuel efficient bore in that class.

### Low Speed, Fuel No Problem

M220's low compression and low speed is suitable for all oil grades, making it easy to adapt to 150 cSt. ISOVCO, the world's best approved fuel approved to 150 cSt. ISOVCO.

### High Reliability

The latest production methods and equipment and Yanmar's superb quality control add up to a reliable diesel engine, one which can run for more than 2000 hours without overhaul.

### Easy Handling, Maintenance and Service

In addition to the compact construction of the fuel pump, service, everything is done out of consideration of easy handling and repair, maintenance, inspection and starting.

### Complete

Each engine runs on a full range of compression for flexibility in use of the engine class.

PERFORMANCE



