



MT - 240K / 308 型



船用齒輪箱

MARINE GEARBOX



三錢牌船用齒輪箱獲國家銀質獎

"SAN QIAN" MARINE GEARBOXES HAVE WON THE NATIONAL

SEVİNÇ

15 ARALIK 1997

JENERATÖR ve SAN.TİC.LTD.ŞTİ.

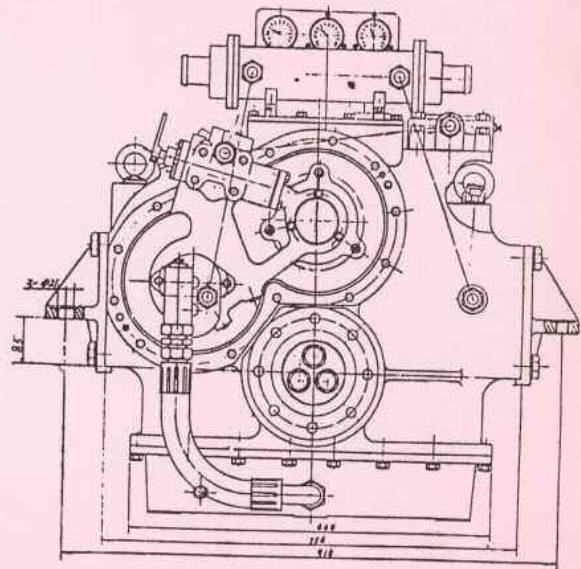
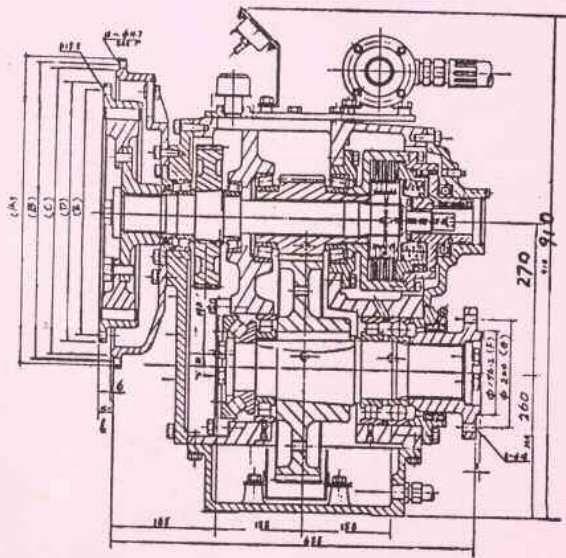
el:(0212) 250 12 01-250 24 43-237 06 34-237 06 36 Bahriye Cd. No. 179 Kasımpaşa-İST.
Fax: 250 68 87 Fax: 292 26 99 E-Mail: Sevic @ Escort net. com



外形尺寸

OVERALL DIMENSIONS

(MT - 240K 308 型)



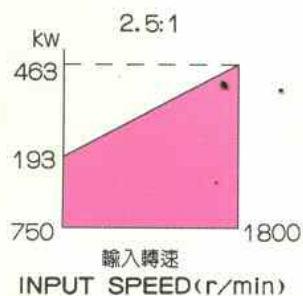
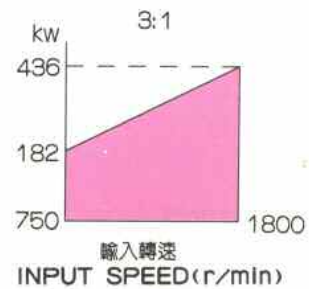
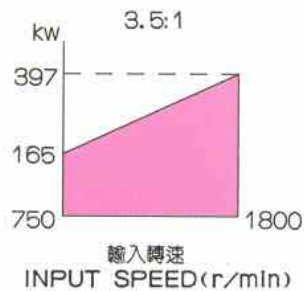
前端蓋安裝尺寸		ASSEMBLING DIMENSIONS						
機型	位置	A	B	C	D	E	\varnothing_2	l
SAE NO. 1		$\varnothing 552.5$	$\varnothing 530.22 \pm 0.2$	$\varnothing 511.17 - \begin{smallmatrix} 0 \\ 0.12 \end{smallmatrix}$	$\varnothing 466.72 - \begin{smallmatrix} 0 \\ 0.1 \end{smallmatrix}$	$\varnothing 438 \pm 0.2$	8- $\varnothing 13.7$	25.4

輸出法蘭安裝尺寸				OUTPUT FLANGE ASSEMBLING DIMENSIONS			
F		G		H		\varnothing_1	
$\varnothing 156.2 \pm 0.7$		$\frac{\varnothing 200}{\varnothing 241.3}$		$\frac{\varnothing 240}{\varnothing 279.4}$		8- $\varnothing 18$	

特長 FEATURES

- 整機結構緊湊，體積小，重量輕。
- 倒順車均具有相同的減速比和傳遞能力。
- 傳動齒輪均採用優質合金鋼，經滲碳、精密磨削等加工，齒輪强度高，噪音小。
- 液壓操縱離合器，工作安全可靠。
- 離合器置於箱體後端，祇要卸下後端蓋，便可更換摩擦片，維修方便簡單。
- 輸入輸出軸端密封性能好。
- 輸入聯節採用齒形橡膠套，緩沖吸震性良好，裝拆方便。
- 離合器應急機械接合機構在液壓系統發生意外事故時，保證船舶返回港口。
- Compact in construction, light in weight and small in dimension.
- Identical reduction ratios and transmitting capacity for ahead and astern revolutions.
- Driving gears made of superior steel, carburized, hardened as well as ground and finished precisely, with high strength and low noise in operation.
- Hydraulic-operated clutch safe and reliable in service
- Position of clutch device in aft, rendering maintenance and repair expedient by removing aft cover to change the frictional plates.
- Oil tight on the ends of input and output shafts.
- Tooth shape rubber block as good absorber installed on input coupling, assembling and disassembling easily.
- A mechanical lock-up of clutch enabling the boat to port in the failure of the hydraulic system.

額定傳遞能力 RATED CAPACITY



型號 Type	Partcuplars 項目	速 比 Ratios					重量 Weight
		2:1	2.5:1	3:1	3.5:1	4:1	
MT-240K 30B	名義速比 RATIOS	2:1	2.5:1	3:1	3.5:1	4:1	835
	實際速比 ACTUAL RATIOS	2.029:1	2.533:1	2.926:1	3.417:1	3.889:1	
	傳遞能力 (HP/l/min)	0.35	0.35	0.33	0.30	0.25	



產品說明 INSTRUCTION

- 我廠是國家一級企業，我廠制造的系列船用齒輪箱制造技術先進，在新加坡通過美國 ABS 船級社和中國“ZC”認可，還榮獲國家質量銀質獎，部優等稱號；
- 340K 型船用齒輪箱具有倒順、離合、減速及承受螺旋槳推力等多種功能，可與各種高、中速船用柴油機配套，組成船用動力機組，用於各種中、小型內河及沿海船舶。
- 我廠制造的船用齒輪箱出廠前均嚴格檢驗，保證船舶的航行安全使用。

*SCMMP is a National First-class Enterprise. Its series marine gearboxes have been approved by ABS in Singapore and by ZC in China and it is advanced in technology and quality. It won the National Quality Silver Medal and the High-quality prize of the ministry.

*MT-340K marine gearbox can perform the duties of engagement and disengagement, reduction of speed as well as carrying the propeller thrust. It can be coupled with all kinds of marine diesel engines with middle or high speed, so as to form a complete marine power unit, suitable for use in ships of small or middle size navigating on inland river or coastal water.

*In order to serve the users well, all of the marine gearboxes are to be checked strictly by us, the manufacturer before delivery.

總經理：廣州船舶工業公司
地址：中國廣州龍福路 67 號
電話：3334745
電傳：44210 CSIGB CN

General sales agent:
GUANGZHOU SHIPBUILDING CO., LTD. (GSC)
Address: 67 Pan Fu Road Guangzhou, China
Tel: 3334745 3348988-1011
Telex: 44210 CSIGB CN

香港代理：華昌國際船舶有限公司
地址：香港中環德己立街 2-18 號美豐大廈 501 室
電話：8456090
傳真：8452925
電傳：83078 GWONG HX

HONGKONG AGENCY WAH-CHANG INTERNATIONAL
MARINEINDUSTRY CO., LTD.
ADDRESS: 501, YIPPLING BUILDING 2-18D, AGUILAR ST.,
CENTRAL HONG KONG G. P. BOX 9242 HONGKONG
TELEX: 83078 GWONG HX
TEL: 8456090 FAX: 8452925

地址：中國廣西梧州市雙橋路 73 號
郵政信箱：中國廣西梧州 210 信箱
駐外辦事處：上海市新華路 24 號 303 房
 廣州市河南金沙路 39 號 301 房
電話總機：5824021 電報掛號：4767
郵政編碼：543004

Address: 73 Qian Jian Road, Wuzhou, Guangxi, China
P. O. Box: 210 Wuzhou, Guangxi, China.
Shanghai Office: Rm 303, 24 Xinhua Road, Shanghai
Guangzhou Office: Rm 301, 39 Jinsha Road, Guangzhou
Tel: 5824021 Cable: 4767
Post Code: 543004